

# *Hastings North Business Area Public Realm*

*East Hastings Street : Semlin to Renfrew*

(November 2006)



# TABLE OF CONTENTS

EAST HASTINGS STREET INVENTORY	Page
2000 block E. Hastings ( Semlin Dr. to Lakewood St.) .....	4
2100 block E. Hastings ( Lakewood St. to Templeton St.) .....	5
2200 block E. Hastings ( Templeton St. to Garden Dr.) .....	6
2300 block E. Hastings ( Garden Dr. to Nanaimo St.) .....	7
2400 block E. Hastings ( Nanaimo St. to Kamloops St.) .....	8
2500 block E. Hastings ( Kamloops St. to Penticton St.) .....	9
2600 block E. Hastings ( Penticton St. to Slocan St.) .....	10
2700 block E. Hastings ( Slocan St. to Kaslo St.) .....	11
2800 block E. Hastings ( Kaslo St. to Renfrew St.) .....	12

# TABLE OF CONTENTS

## EXAMPLES OF POSITIVE FEATURES

a) Greenery .....	13
b) Murals .....	14
c) Sidewalk Treatments .....	14
d) Vibrant Store Fronts .....	15
e) Interesting Window Displays .....	15
f) Street Furniture .....	16
g) Sidewalk Eateries .....	16
h) Creative Security Solutions .....	17
i) Interesting Architectural Features .....	17
j) Interesting Back Lane Features .....	18
k) Pleasant Side Boulevards .....	18

# TABLE OF CONTENTS

## EXAMPLES OF AREAS FOR IMPROVEMENT

a) Auto-oriented Signage .....	19
b) Graffiti & Vandalism .....	19
c) Sidewalk in Disrepair .....	20
d) Unmaintained Greenery .....	20
e) Curbcuts .....	21
f) Unsightly Security Bars .....	21
g) At-grade Parking .....	22
h) Lack of Greenery .....	22
i) Unmaintained Unsightly Back Lanes .....	23

# 2000 block E. Hastings (Semlin Dr. to Lakewood St.)



LEGEND

- Greenery
- Tree
- At-grade front parking
- Curbs
- Auto-oriented signage
- Blank wall
- Unsightly security bars

2100 block E. Hastings (Lakewood St. to Templeton St.)



LEGEND

- Greenery
- Tree
- At-grade front parking
- Curbcut
- Auto-oriented signage
- Blank wall
- Unsightly security bars

# 2200 block E. Hastings (Templeton St. to Garden Dr.)



LEGEND

- Greenery
- Tree
- At-grade front parking
- Curbs
- Auto-oriented signage
- Blank wall
- Unsightly security bars

# 2300 block E. Hastings (Garden Dr. to Nanaimo St.)



LEGEND

- Greenery
- Tree
- At-grade front parking
- Curbcut
- Auto-oriented signage
- Blank wall
- Unsightly security bars

# 2400 block E. Hastings (Nanaimo St. to Kamloops St.)



LEGEND

- Greenery
- Tree
- At-grade front parking
- Curbcut
- Auto-oriented signage
- Blank wall
- Unsightly security bars

# 2500 block E. Hastings (Kamloops St. to Penticton St.)



**LEGEND**

- Greenery
- ⊙ Tree
- At-grade front parking
- Curbs
- Auto-oriented signage
- Blank wall
- Unsightly security bars

# 2600 block E. Hastings (Penticton St. to Slocan St.)




**LEGEND**

- Greenery
- ⊙ Tree
- At-grade front parking
- Curbcut
- Auto-oriented signage
- Blank wall
- Unsightly security bars

# 2700 block E. Hastings (Slocan St. to Kaslo St.)



LEGEND	
	Greenery
	Tree
	At-grade front parking
	Curbcut
	Auto-oriented signage
	Blank wall
	Unsightly security bars

2800 block E. Hastings (Kaslo St. to Renfrew St.)



LEGEND

- Greenery
- ⊙ Tree
- At-grade front parking
- Curbcut
- Auto-oriented signage
- Blank wall
- Unsightly security bars

# EXAMPLES OF POSITIVE FEATURES

## a) Greenery

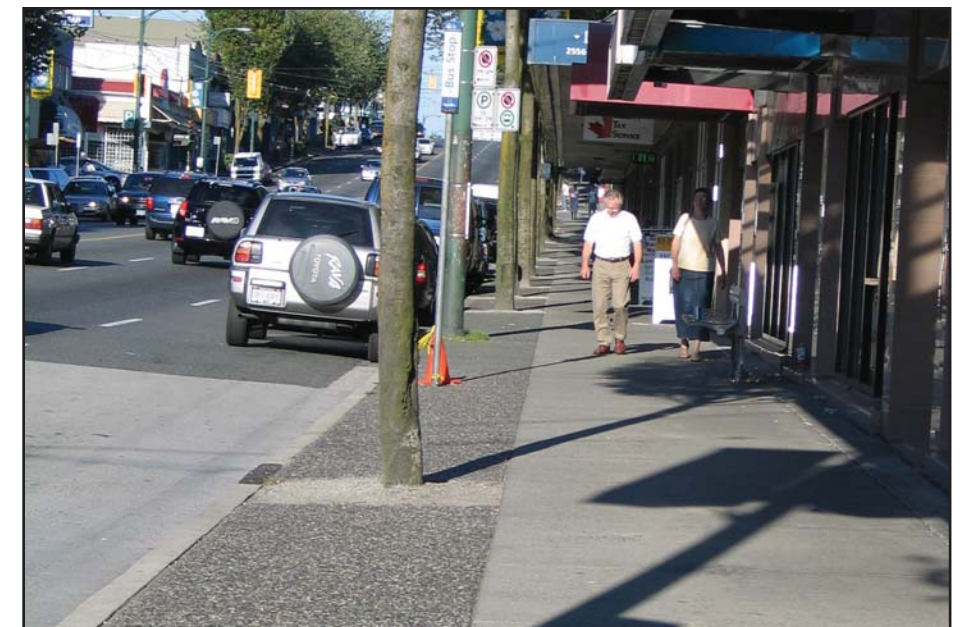


# EXAMPLES OF POSITIVE FEATURES

## b) Murals



## c) Sidewalk Treatments



# EXAMPLES OF POSITIVE FEATURES

## d) Vibrant Store Fronts



## e) Interesting Window Displays

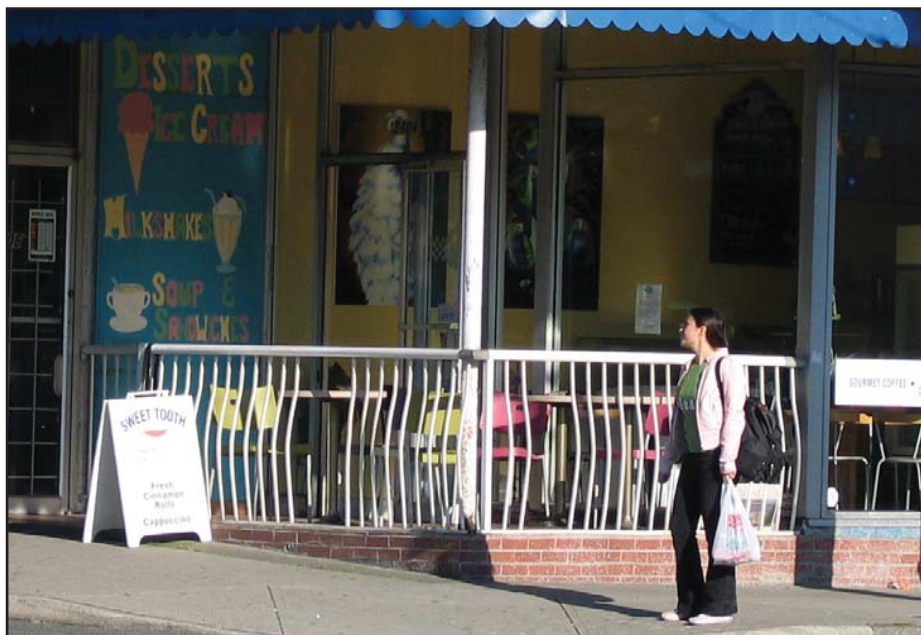


# EXAMPLES OF POSITIVE FEATURES

## f) Street Furniture



## g) Sidewalk Eateries



# EXAMPLES OF POSITIVE FEATURES

## h) Creative Security Solutions



## i) Interesting Architectural Features



# EXAMPLES OF POSITIVE FEATURES

## j) Interesting Back Lane Features

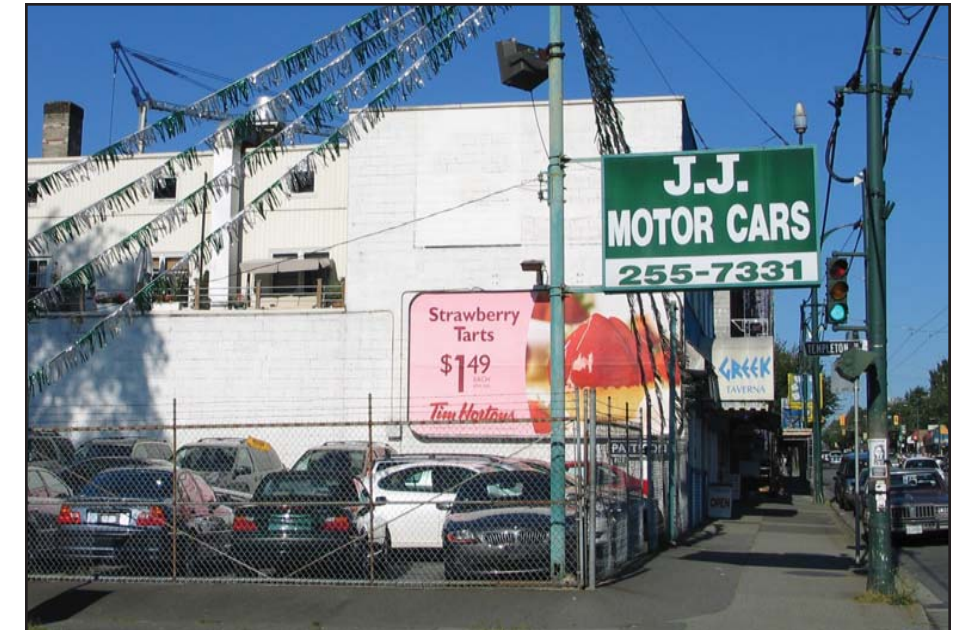


## k) Pleasant Side Boulevards



# EXAMPLES OF AREAS FOR IMPROVEMENT

## a) Auto-oriented Signage



## b) Graffiti & Vandalism



# EXAMPLES OF AREAS FOR IMPROVEMENT

c) Sidewalk in Disrepair

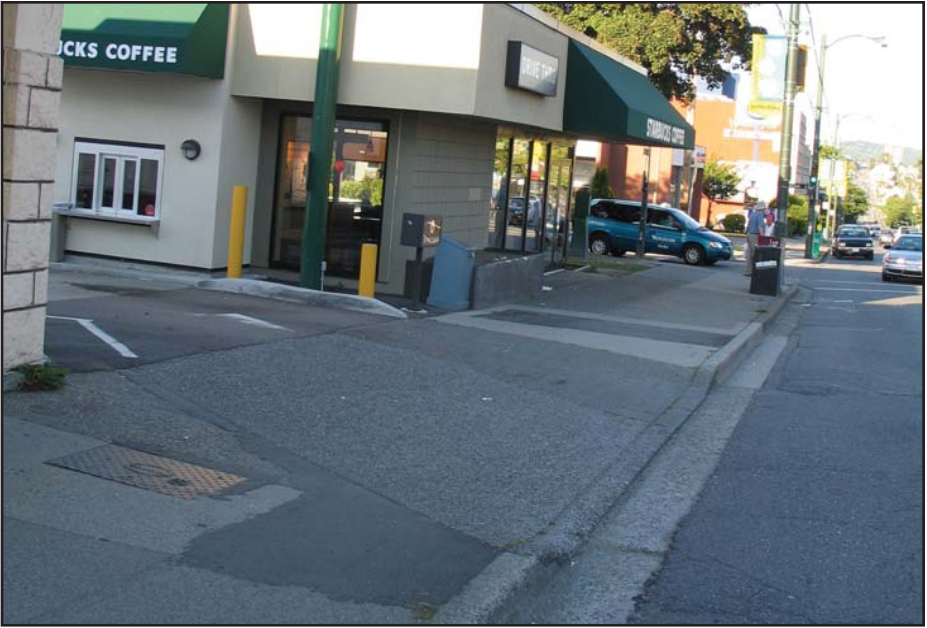


d) Unmaintained greenery

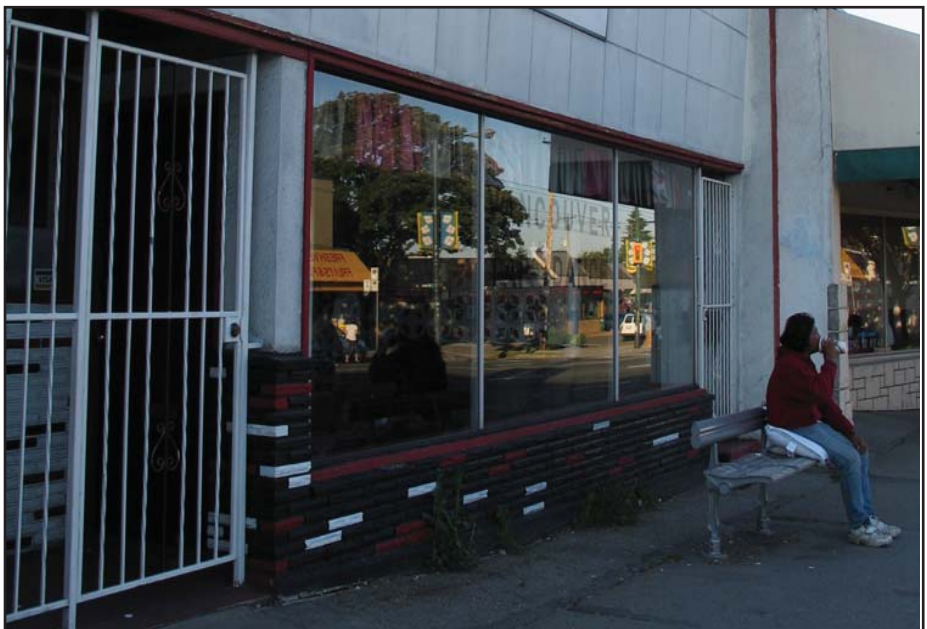


EXAMPLES OF AREAS FOR IMPROVEMENT

e) Curbcuts



f) Unsightly security bars

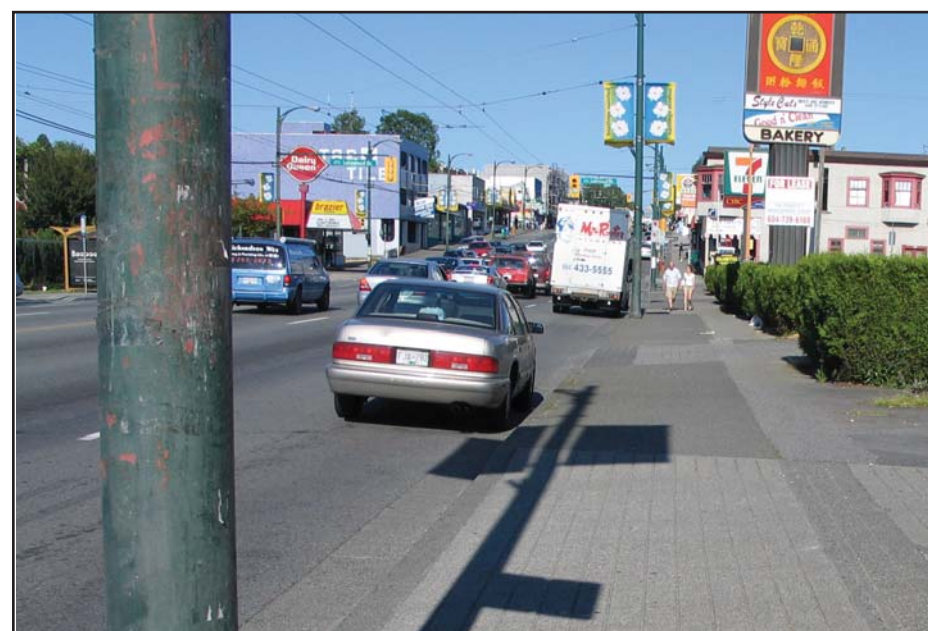


# EXAMPLES OF AREAS FOR IMPROVEMENT

## q) At-grade Front Parking



## h) Lack of Greenery



# EXAMPLES OF AREAS FOR IMPROVEMENT

## i) Unmaintained Unsightly Back Lanes

