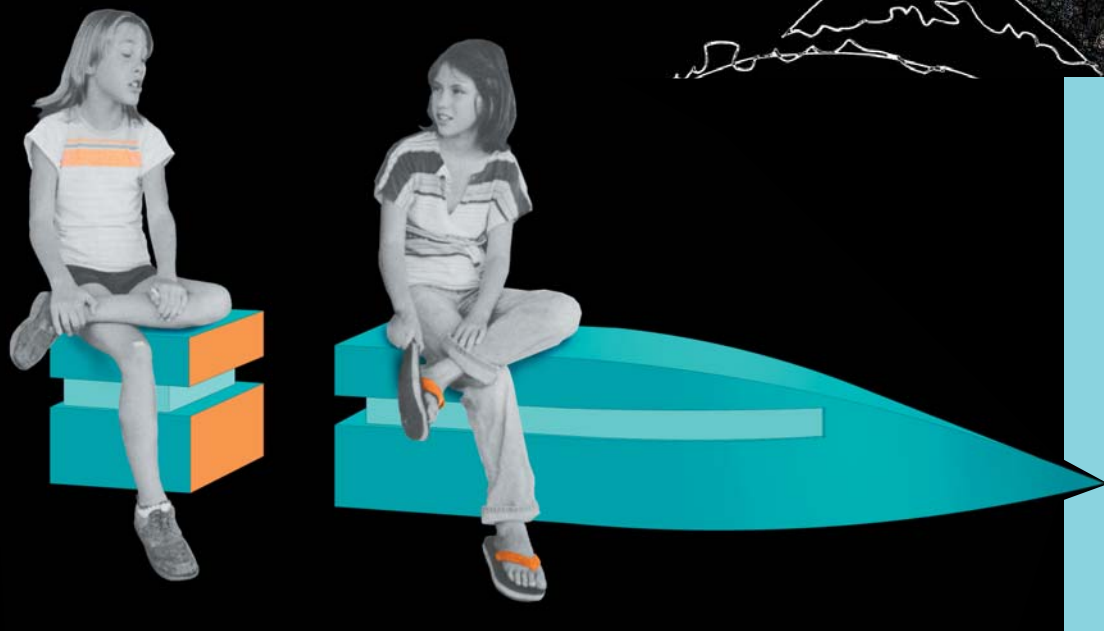


trailing tales

hastings community school GOKA installation proposal



PROJECT DESCRIPTION

Trailing Tales is a community-based art project developed for the grounds of Hastings Community Elementary School. This interactive project will engage students with the social and historical fabric of the community, by inviting them to collect stories about the history of the school and its neighbourhood. Selections of these tales will be inscribed on sculptural seating forms placed in the schoolyard, to be built in participatory workshops with the community. The historical anecdotes and images recorded on these colourful ramped benches will provide increased play opportunities in the schoolyard as well as a social seating area for people to learn about some of the school's stories, and share some of their own.

COMMUNITY PARTICIPATION

Hastings Community School Students, families, and staff will be invited to participate:

- With guidance from coordinating artists, students will gather stories from alumni and from senior community residents about the 100 year history of Hastings Elementary School. They will work together to select quotes that will be transferred onto ceramic tiles.
- Students will collect archival images of the school and the neighbourhood, which will be transferred on to the ceramic tiles.
- Students, families and staff will work with artists to prepare the grounds, lay bricks, sculpt the benches, and install the tiles.

MATERIALS AND INSTALLATION

All materials and installation methods will be safe, long lasting, and will be suitable for participation from all age groups:

- Clay brick: Unfired clay brick will be sculpted to produce a ramped, curved form with rounded edges. All exterior brick surfaces will be glazed to produce a smooth, vibrant and durable surface free of sharp or rough edges. Bricks will be glazed and fired at Hastings School, and/or Jaimie Robson's studio.
- Ceramic Tile: Industrial strength, frost resistant ceramic tile will be embedded into the sides of the bench forms.
- Decals: Ceramic decals printed with anecdotes and archival imagery will be applied to ceramic tiles.
- Cement: Cement will be used to form a secure foundation for the benches.

WHAT WE BRING TO THE PROJECT

Jaimie Robson and Alison Maddaugh are residents of the Hastings Sunrise neighbourhood. They are actively involved with the local community through art and landscape, and also have art studios in the area. To the project they bring professional experience in landscape architecture and in the development and production of community engaged public art projects.

Alison's background includes landscape architecture and visual art. Her graduate thesis for her MLA degree was a proposal for the redesign of the Britannia Elementary School yard. She worked as a graduate research assistant with the CHILD Project at UBC, studying outdoor play environments for children. Alison currently works as a landscape designer, and has a studio practice in the Grandview Woodlands neighbourhood, focusing on painting and performance installation.

Jaimie, a graduate of the Emily Carr Institute of Art and Design, works in ceramics, puppetry, and site-specific performance installation. In 2005 she co-developed *Our Community Story*, a living history project that involved youth, seniors, and artists in the Hastings Sunrise Neighbourhood. The stories gathered were told through film, animation and audio installations in nine cafes and shops along East Hastings Street. Jaimie is also the co-founder of Media UnDefined (mediaundefined.ca), a Vancouver-based arts organization.

