



Cassiar Corridor

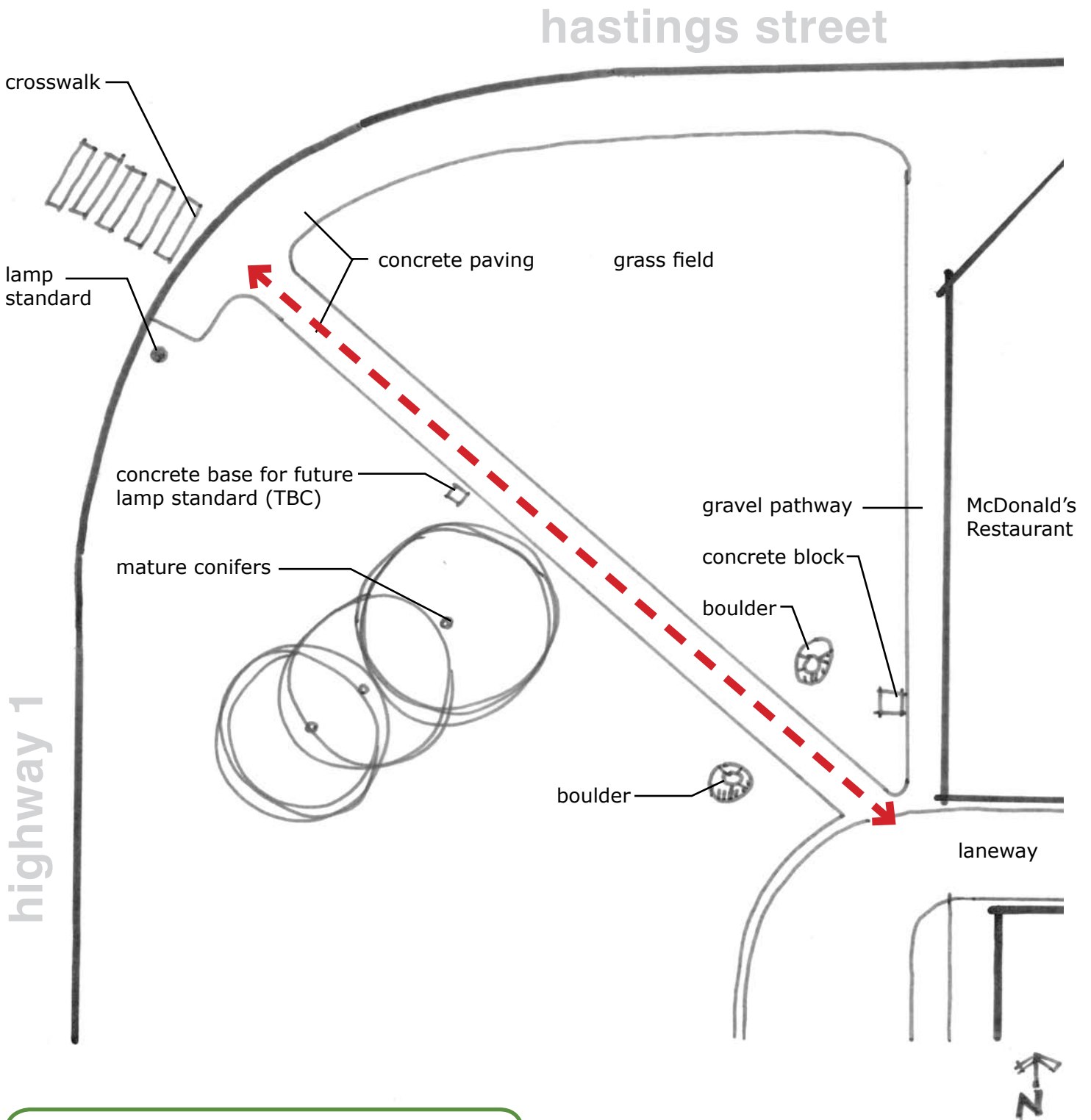
hastings sunrise public spaces

design concepts

design concepts prepared by Alison Maddaugh for Hastings Sunrise Public Spaces, based on input provided from the preceding workshop and summary report.

HastingsSunrise.PublicSpaces@gmail.com

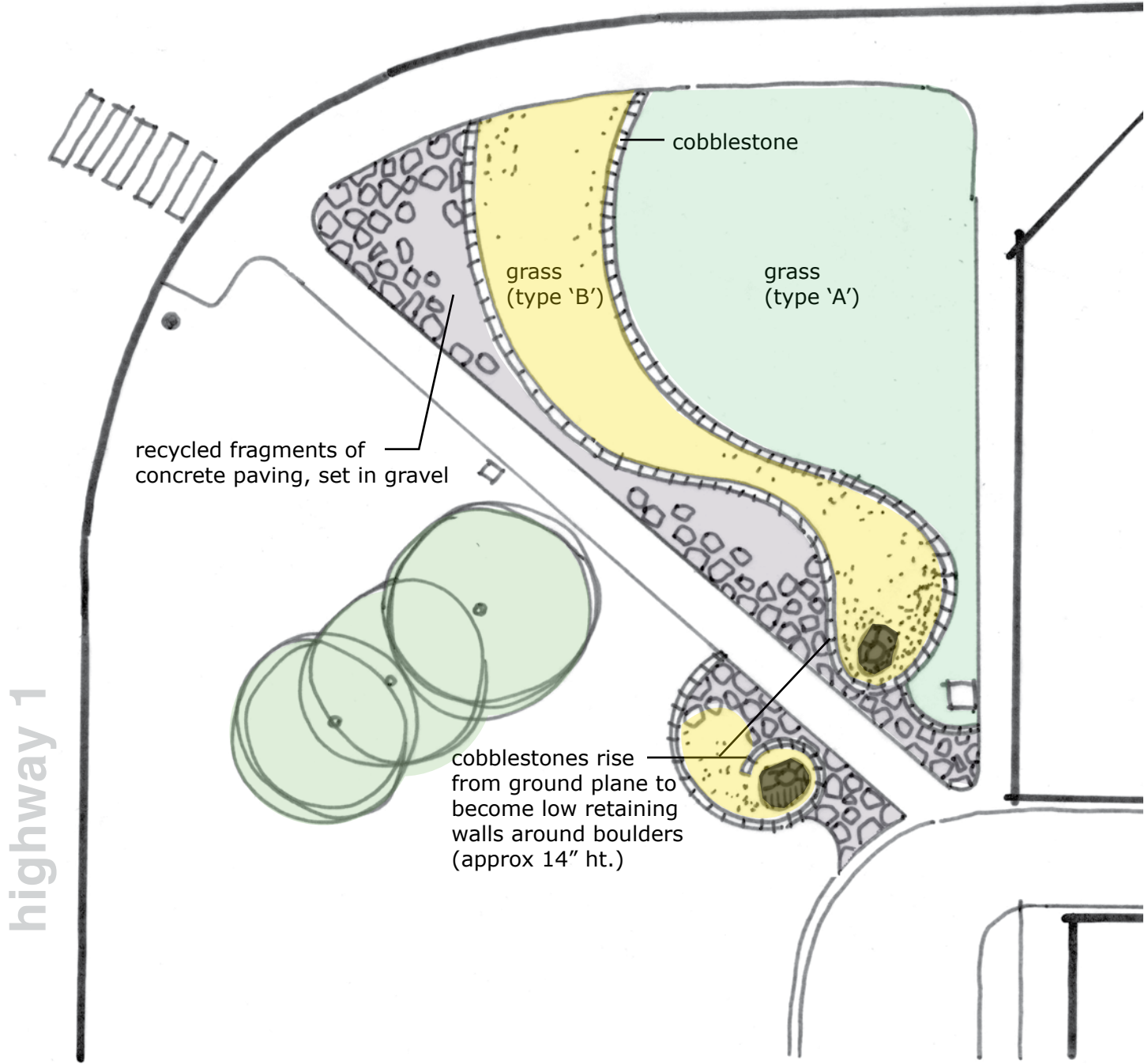
existing conditions



existing concrete walkway is regularly used by pedestrians and cyclists, but is too narrow to adequately accommodate both user groups.

organic option

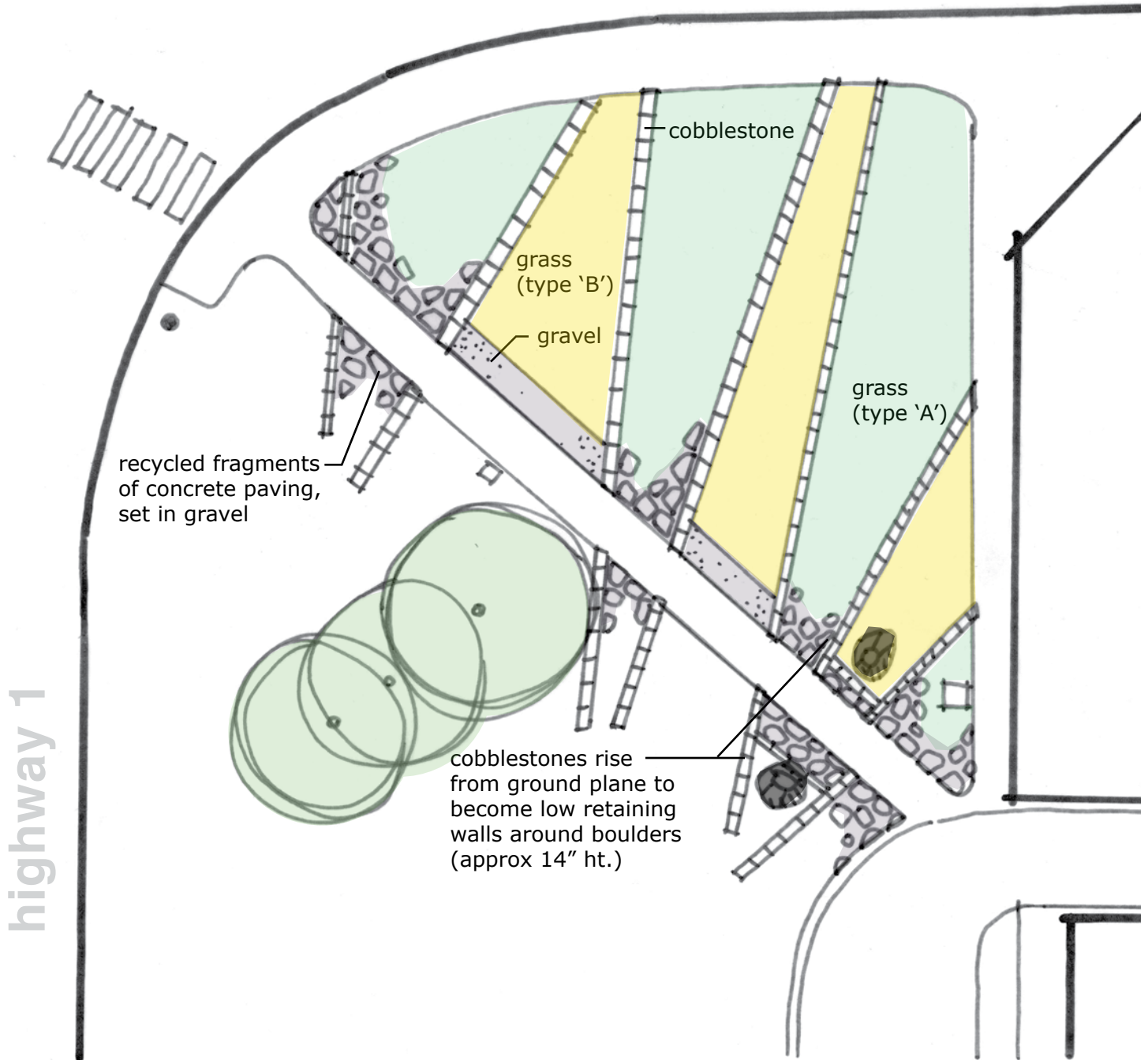
hastings street



the corridor is widened along the northeast edge and at each terminus of the pathway. The textures of stone and grasses introduce a sculptural quality to the site, while accentuating the boulders as a threshold or gateway.

linear option

hastings street



the corridor is widened along the northeast edge and at each terminus of the pathway. The textures of stone and grasses introduce a sculptural quality to the site, while accentuating the boulders as a threshold or gateway.

suggested materials



fragments of recycled concrete paving, set in gravel



cobblestones as edging, stacked in low retaining walls, or decorative details



contrasting bands of grasses