



Hastings-Sunrise Public Realm Subcommittee

Implementing the Community Vision

Hastings Sunrise Public Realm Sub-committee
2620 E. Hastings St.
Vancouver BC V5K 1Z6

October 31, 2007

Vancouver Board of Parks and Recreation
Neighbourhood Matching Fund
2099 Beach Avenue
Vancouver, BC, V6G 1Z4

Re: Hastings-Sunrise *BenchMark* Project Neighbourhood Matching Fund Request

Dear Board Members;

Attached is our application to the Neighbourhood Matching Fund for the Hastings Sunrise *BenchMark* project. Our Public Realm Sub-committee, a community based group comprised of both residents and business owners, has spent the last two years researching and developing the *BenchMark* proposal.

Briefly, the *BenchMark* project is a multi-staged project to transform targeted spaces in our neighbourhood from "dead" space, to "live" spaces that attractively enhance our community and encourage people interactions and a the sense of community such interaction brings. To accomplish this, we will install structures that are suitable for sitting upon and conducting all the activities that people do when sitting together including eating, talking, playing, etc. In addition to the benches, we will also install paving stones and various planting schemes to enhance the physical beauty of each space. The benches will also contain details of the neighbourhood history. Where appropriate, we also envision the incorporation of murals that complement our vision. The details of our proposal are included in the attached application, as are three reference letters from other business and resident organizations active in our community.

We have included all the information requested, however if you require further information or clarification please contact me at 604-253-4188 ext. 288. We look forward to hearing from you soon.

Sincerely,

Patrick Mueller
Co-Chair
Hastings-Sunrise Public Realm Sub-committee



Application for a Neighbourhood Matching Fund Grant – October 31, 2007

Contact Information:

Hastings Sunrise Public Realm Sub-committee
2620 E. Hastings St.
Vancouver BC V5K 1Z6

Contact: Patrick Mueller, co-chair
Email: hsc@vcn.bc.ca
Phone (daytime): 604.253.4188 ext. 288

Sponsoring Organization:

The Hastings Community Association is the proposed fiscal sponsor for the project. The association is expected to endorse its role as the fiscal sponsor at the next board meeting in November.

Hastings Community Association
3096 E. Hastings St.
Vancouver, BC, V5K 2A3

Contact: Paul Calderhead
Email: paul.calderhead@vancouver.ca
Phone: 604.718.6227



The Hastings-Sunrise Public Realm Sub-committee:

The Public Realm group is a sub-committee of the City Plan Committee for Hastings-Sunrise. Community members (residents and the Hastings North Business Improvement Association) formed the group in February 2006, and we volunteer our time to implement Hastings-Sunrise vision directions regarding public realm improvements in our community. ¹

Our overall goal along Hastings Street is to improve public areas to make them more useable and attractive for all community members. We want to encourage the use of the Hastings Street public areas as places to gather and recreate, rather than places to pass through. To meet that objective we are developing projects to implement community vision directions 18.10 (Improve the Area's Appearance) and 18.13 (Better Utilize Wide Side Streets) which are described in detail in the attached City Plan committee letter of support. ²

To develop our ideas we have held several community workshops over the past two years. Based on the community input from that process we developed **BenchMark**, a proposal to install sculptural benches at various sites in the neighborhood. The first benches will be placed at the Northwest corner of Kamloops at Hastings. Total cost for this project including the matching funds is \$65,070.

The *BenchMark* Proposal:

BenchMark is a long-term community improvement project that we intend to realize in several phases. Over the past two years we have recruited and engaged both neighbourhood residents and local business owners to develop this proposal. **BenchMark** is a detailed plan to implement the community vision in two locations for a vibrant, attractive public realm that will engage all community members and foster community pride and connections. Now we are ready to enter the next stage, namely the installation of public art, greenery and structures to make this plan a reality.

To lay the groundwork for this project, our committee performed extensive research including: documenting the public realm inventory of Hastings Street, conducting several community charrettes, and going on several trips into other communities to view structures and "places" that inform our own projects. Examples of some of this groundwork are included in the Appendices and Attachments section. Applying this information, we feel that our projects have a greater chance of succeeding and accomplishing their objectives, namely, the establishment of places that enhance and contribute to community interaction and public exchange.

At this time we are pursuing installation of Phase 1 of **BenchMark**. This involves the installation of cobblestone paving around "story" benches composed of glazed brick, "story" tile, and concrete. Some additional garden area will also be created. D. Bosa Land Corporation has offered to donate a large number of cobblestones, from a soon to be demolished (nearby) building. These will be temporarily stored at the Hastings Community Centre until needed for our project. Community volunteers will remove the previous mortar, sort and select appropriate



pieces for paving to define areas where the benches will be installed. The bricks and tiles used for the benches will be glazed, fired and installed by volunteers under the direction of community artists and craftsmen. Extensive community participation is necessary for both the preparation and installation of the cobblestones, brick, ceramic tile and garden. The outcome will be benches that are both visually and historically appealing and can be used for seating, gathering and play. (For a full description of this project, please see the attached files, in the Appendices and Attachments section – Appendix A and B)

For reasons described in the full proposal, our first site for a **BenchMark** installation is the Northwest corner of Hastings and Kamloops, on the East side of the TD Canada bank. Currently the site looks like this:



The TD bank at Kamloops and Hastings



a community resident eating dinner

As you can see, the site is reasonably well maintained but offers no substantive community interaction features. In fact, during the **Benchmark** charrette we organized for August 22, 2007, someone came and sat on a curb at the site to eat dinner (see above photo). This spontaneous act underscored the need for seating areas at this site.



Community members and artists strategizing and testing out possible bench placements during the August 22 charrette.



BenchMark is integrated with other community art initiatives in our area: the “**Our Community Story**” mosaics that will be installed on Hastings Street, and the **GOKA story benches** being installed at Hastings School. The project is spearheaded by a pair of local community artists, Jaimie Robson and Alison Maddaugh, who have previous experience in developing and installing community art projects in our neighborhood. ³



Project Schedule:

The public art installation is scheduled to begin in June, 2008. Numerous other activities are planned to encourage and expand community participation in this project:

- October 2007 – March 2008: **Fundraising activities**
 - Researching and applying for grants from funding organizations
 - Soliciting donations from businesses and organizations in our community
- November 2007 – May 2008: **Project promotion activities**
 - Prepare promotional materials “how to get involved”
 - Plan and conduct three promotional events “what’s going on – how to get involved”
 - Sign up volunteers for future activities
- Feb 2008 – May 2008: **Pre-installation community engagement activities**
 - All the following activities are open to community members. The activities will be promoted to identify new volunteers. Previously identified volunteers will be contacted and invited to participate.
 - Conduct the “clean the cobblestones” event to prepare, sort, select and store the donated cobblestones.
 - Conduct the “story tile” community workshop to develop the stories to put on the tiles.
 - Conduct two “final project planning” workshops to work out the nitty gritty installation design details and a work schedule, volunteer sign up, etc.
 - Conduct the “brick glazing and firing” event to prepare the bricks for installation.
 - Conduct the “story tile decaling, glazing and firing” event to prepare the story tiles for installation.
- June 2008 – July 2008: **Installation activities**
 - Conduct the installation of the benches, cobblestones and garden. Community members (recruited through promotion and pre-installation activities) will assist tradesmen and, where feasible, conduct the installation work, as per the schedule developed in the “final project planning” workshops.
- August 2008 – Sept 2008: **Post Installation promotion activities**
 - Prepare the “project history” document, and other promotional materials that explain the project, and emphasize how to “get involved”.
 - Publicize the installation through media and distribution of printed materials



Project Budget:

Table 1: Volunteer Timesheet		
Task	Volunteer Hours	Plans
Cobblestone Preparation (Cleaning, Sorting, Selecting, Stacking):	75	3 days, 5 volunteers, 5 hours
Cobblestone Installation (assisting tradesman with site prep and installation):	64	4 days, 4 volunteers, 6 hours per day
Brick glazing, firing and installation:	60	5 days, 3 volunteers, 4 hours per day
Tile decaling, glazing, firing and installation:	36	3 days, 3 volunteers, 4 hours per day
Garden site preparation and planting:	60	5 days, 3 volunteers, 4 hours per day
Garden maintenance (first year):	56	10 hours per month - dry season (4 months) 2 hours per month - wet season (8 months)
Community Workshops and Planning meetings (final design details, recruitment, work planning, community updates, story development):	180	3 big meetings: 2 hours per meeting, average 10 attendees 3 workshops: smaller task meetings: 4 hours per workshop, average 10 attendees
Project Promotion (preparation of promotional and recruitment materials, documentation of project installation, preparation of project history document)	90	2 volunteers: promotion and recruitment: 10 hours documentation of project: 10 hours project history document: 10 hours 3 promotional events: 2 hours per event, 5 volunteers
Total Hours (estimated)	621	



Table 2: Project Budget and Neighbourhood Matching Fund Request			
Receipted Expenses		Matching Funds/Materials/Services/Volunteer	
Artist Fees	\$13,200	591 volunteer hours @ \$10 per hour (refer to table 1 above)	\$ 6,210
Concrete formwork, materials, pouring	\$12,000	D. Bosa Land Corporation (500 sq. ft. cobblestones)	\$ 9,000
Relocation of bike rack with new concrete pad	\$1,000		
Concrete cutting	\$750		
Glaze Materials	\$800		
Studio space & firing costs	\$500		
Tiles & Decals	\$600		
Bricklaying (Materials, Delivered)	\$1,200		
Bricklaying (Labour)	\$2,500		
Cobblestone site preparation and installation (Labour)	\$2,500		
Bedding (Plants, Delivered)	\$2,000		
Bedding (Installation)			
Soil (Delivered and Graded)	\$1,000		
Lawn (Delivered and Installed)	\$1,000		
Project Promotion and Recruitment (materials, printing, advertising costs)	\$2,000		
Contingency (20% of 39050)	\$7,810		
Total Cash Required	\$ 48,860		
Less Funds Raised	\$ 0		
Total Requested from NMF	\$ 10,000	Total Match	\$ 16,210



Community Support:

The Hastings-Sunrise Public Realm Sub-committee has undertaken several other successful projects including a local walking tour. This tour was led by John Atkin and was attended by about 40 community members. Events such as this have raised the local awareness of our committee and serve as a means to also publicize our other projects, including the one described herein. In addition, our committee also has members from the local Business Improvement Association. Thus we have a direct line to our local merchants to solicit their ideas, energy, feedback and commitment.

BenchMark is supported by the Hastings Community Association, the Hastings-Sunrise City Plan Committee, and the Hastings North Business Improvement Association. Please find the letters of support in the Appendices and Attachments section below.

Legacy of the Project:

Several concerns throughout the city, not just in our neighborhood, are vandalism (graffiti and “tagging”), homelessness, and garbage. The **BenchMark** structures that we are installing have several design features that resist this kind of misuse and abuse that could lead to degradation of the site. To prevent the benches being used as sleeping platforms, they have only a minimal horizontal flat space (see Appendix B) which then descends at a steep enough angle to prevent usage as a sleeping surface yet still be used as a sitting space. The construction will also be done using glazed materials that resist permanent graffiti marking and allow its easy and rapid removal. Obviously, dedicated “taggers” can find ways around this but it’s a well known fact that if you maintain a space and remove graffiti quickly, the taggers soon abandon their attempts at that location. There are several murals in our neighborhood and due to diligent maintenance, even after several years they are still clean of this kind of vandalism.

The Hasting North BIA supports local merchants with mural maintenance, graffiti removal and local garbage collection programs, and it also supports our community policing centre in similar community programs. The TD Bank has demonstrated many years of excellent maintenance of the garden and lawn adjacent to its building, where **BenchMark** will be located. These organizations have an excellent track record for the maintenance of their art projects and property, and there is no compelling reason to question their commitment to maintain **BenchMark** in an attractive, inviting and useable state. The BIA has had extensive input in this project to ensure the installation can be properly maintained using reasonable maintenance practices.

The installation will be public infrastructure designed and built by community members to meet needs identified by the community. The installation will encourage community building at its most basic level. People will have a place to gather, be near one another, and interact with one another. This will be the most important legacy of **BenchMark**.



Hastings-Sunrise Public Realm Subcommittee

Implementing the Community Vision

Once the project is installed, we will hold and publicize an “opening” event by informing the broadcast and print media of its installation. We are also planning to produce brochures to publicize the history of the **BenchMark** project, and various other interesting features of our neighborhood that we think our residents would enjoy knowing about. These closing out activities will help to establish connections between community members and will help encourage residents to maintain our public spaces.

¹ <http://vancouver.ca/commsvcs/planning/cityplan/Visions/hs/vision.htm>

² <http://vancouver.ca/commsvcs/planning/cityplan/Visions/hs/pdf/neighcentres.pdf>

³ Media Undefined. <http://www.mediaundefined.ca/> Artists: Alison Maddaugh and Jaimie Robson.



Hastings-Sunrise Public Realm Subcommittee

Implementing the Community Vision

Appendices and Attachments:

Appendix A: Benchmark Proposal (October 2007)

BenchMark

**Preliminary Proposal
October 25, 2007**

BenchMark

Synopsis

BenchMark is a public art seating area developed by artists Alison Maddaugh and Jamie Robson, in partnership with the *Hastings Sunrise Neighbourhood's Public Realm Committee*. *BenchMark* will engage members of the local community in the creation of a public gathering place. A multi-phase project, *BenchMark* will be located on the northeast corner of Hastings Street at Kamloops, in the heart of the Hastings Sunrise Neighbourhood.

This interactive project will bring a public face of the social and historical fabric of the community to the street. Drawing on an archive of stories that resulted from *Media Undefined's* 2005 project, *Our community Story** (www.mediaundefined.ca), a selection of historical anecdotes and images about the history of Hastings Street will be inscribed on sculptural seating forms. These colourful, ramped benches and cubes will provide increased opportunities for social interaction, rest, and dialogue, and will aesthetically enhance the neighbourhood streetscape.

Project Description

Originally built in 1885, Hastings Street is one of the earliest established main traffic arteries in and out of the city. While it continues to be one of the busiest east-west traffic corridors in Greater Vancouver, Hastings Street forms the core of the pedestrian-based shopping area in the Hastings Sunrise Neighbourhood. This section of East Hastings Street, from Nanaimo to Kaslo Streets, is characterized by a culture of long established, family-owned businesses. These shops not only serve the local community, but are also destination stores that attract residents from other Vancouver and Burnaby neighbourhoods. Specialty shops such as Polonia Sausage House and Olympia Tailors draw a regular clientele from the lower mainland.

While this is the main shopping district in the area, the street is currently absent of public gathering places and public seating areas.

* Our Community Story was a living history project about the Hastings Sunrise Neighbourhood produced by Media Undefined in 2005. OCS resulted in an audio archive of stories told by residents, about the history of the neighbourhood. For more information go to www.mediaundefeind.ca.



BenchMark will integrate the ideals of *placemaking** into the Hastings Sunrise Neighbourhood. It has been designed as a public destination that will enhance an existing niche of green space, and offer a place to pause along this busy pedestrian corridor.

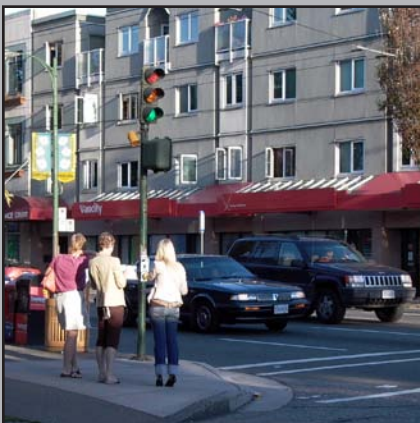
Through a thorough analysis of East Hastings Street from Nanaimo to Kaslo Streets (see site selection criteria below), the northwest corner of East Hastings Street and Kamloops Street has been identified as the most suitable site for this initiative. Located in the heart of the Hastings Sunrise Neighbourhood, this intersection is one of the busiest in the area. Bustling with local residents, commuters, business people, and shoppers, hundreds of pedestrians pass this intersection each day. In addition, this intersection has good visibility with sight lines that allow for visual access from all directions. This corner as well and the corner adjacent to it have been the site of recent greening and improvements, making the intersection suitable for the installation of public art without extensive redesign of the streetscape. The recent addition of an attractive perennial planting bed at this site has enhanced the streetscape. *BenchMark* will build on these improvements to further develop the qualities of 'place-making' already initiated at this site.

Criteria for Site Selection

The following criteria were taken into consideration in the selection of the proposed site:

- Hastings Sunrise Public Realm Committee requested placement at an intersection;
- The intersection at Hastings and Kamloops Streets has been the site of recent greening and site improvements by two local businesses: Vancity Credit Union, and TD Canada Trust;
- Site reflects an existing balance of hardscape and softscape, which allows for the installation of public art/seating elements without extensive redesign of the streetscape;
- At present this intersection lacks public art;
- Consistent mid to high traffic volume will showcase art within the community;
- The selected corner has good visual access from all directions;
- The addition of a public art and seating installation will not interfere with current circulation patterns and current land use;
- The windowless, 'blank' walls that span the northwest and southwest corners of the intersection provide a prime location for a mural. The mural will provide a key vertical element to the cluster of seating that will visually engage passersby from a distance, and will anchor the intersection as a landmark. By bracketing the Hastings corridor, the mural will add to the visual iconography of the neighbourhood.

* "Placemaking is not just the act of building or fixing up a space, but a whole process that fosters the creation of vital public destinations: the kind of places where people feel a strong stake in their communities and a commitment to making things better. Simply put, Placemaking capitalizes on a local community's assets, inspiration, and potential, ultimately creating good public spaces that promote people's health, happiness, and well being. As our survey responses suggest, this process is essential--even sacred--to people who truly care about the places in their lives." (www.pps.org)



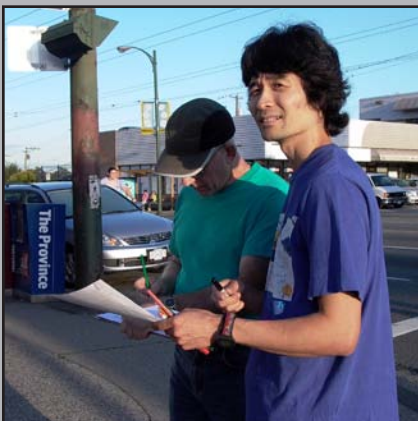
Materials and Installation:

All materials and installation methods will be safe, long lasting, and will be suitable for participation from all age groups:

- Clay brick: Unfired clay brick will be sculpted to produce a ramped, curved form with rounded edges. All exterior brick surfaces will be glazed to produce a smooth, vibrant and durable surface free of sharp or rough edges.
- Ceramic Tile: Industrial strength, frost resistant porcelain tile will be embedded into the sides of the bench forms.
- Decals: Ceramic decals printed with anecdotes and archival imagery will be applied to ceramic tiles.
- Coloured Concrete will be used to form a secure foundation, and internal core for the benches.

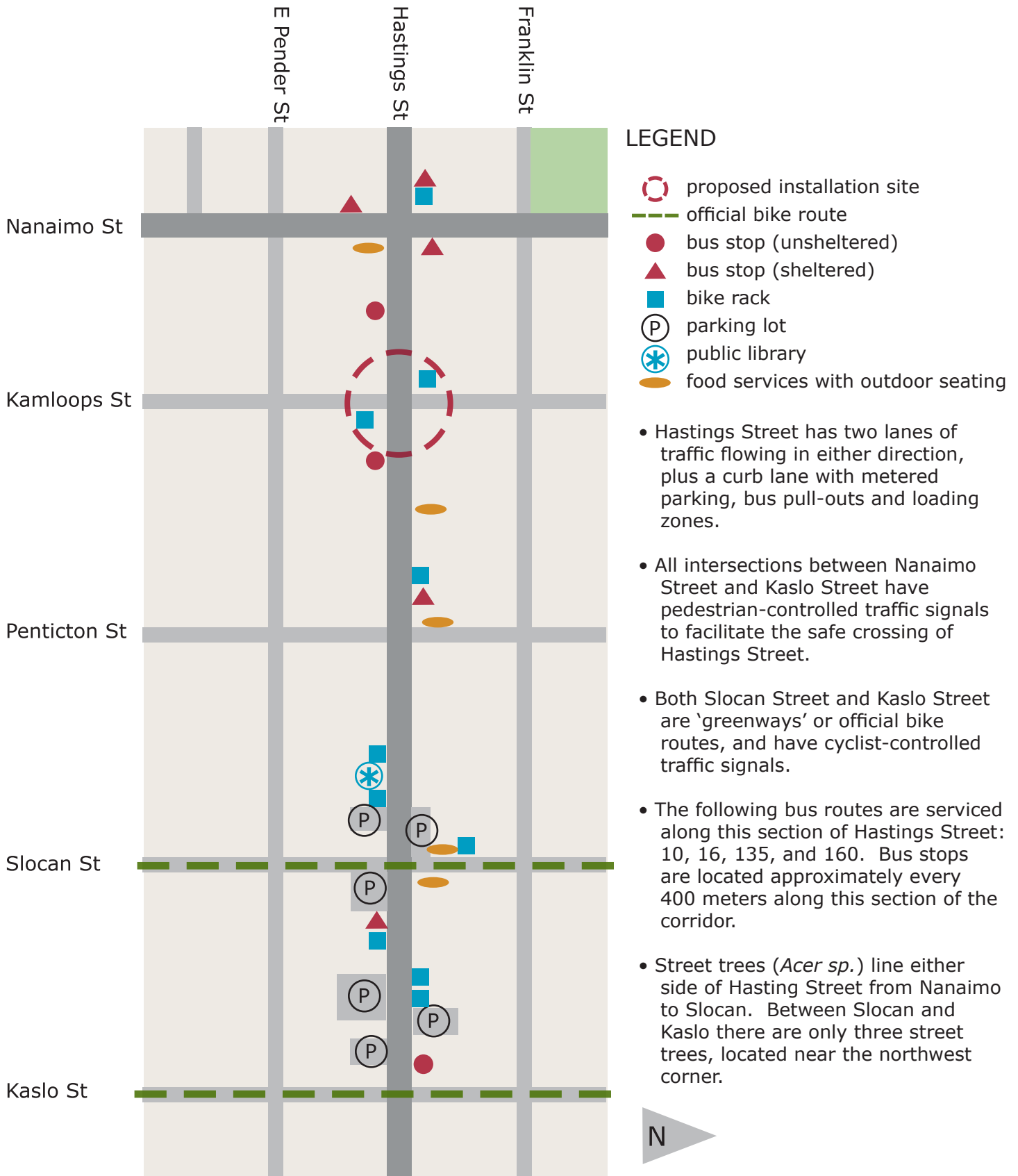
Colour Pallet

A pallet of colours will be selected by the artists, in consultation with the Hastings Sunrise Public Realm Committee and the Hastings North Business Improvement Association.



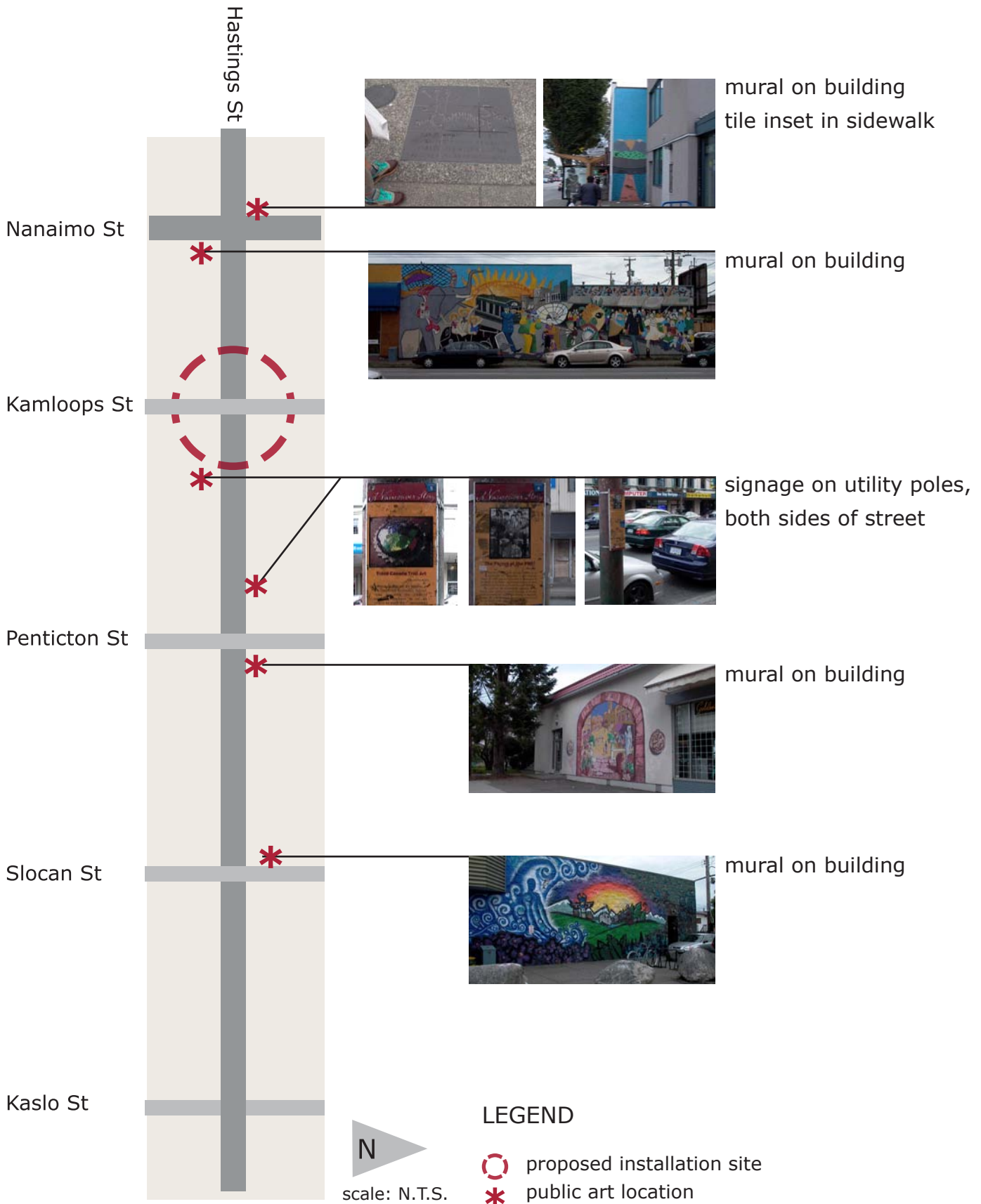
HASTINGS STREET CORRIDOR ANALYSIS

Nanaimo Street to Kaslo Street



PUBLIC ART INVENTORY

Hastings Street corridor, Nanaimo Street to Kaslo Street



INTERSECTION ANALYSIS

Kamloops Street at Hastings Street

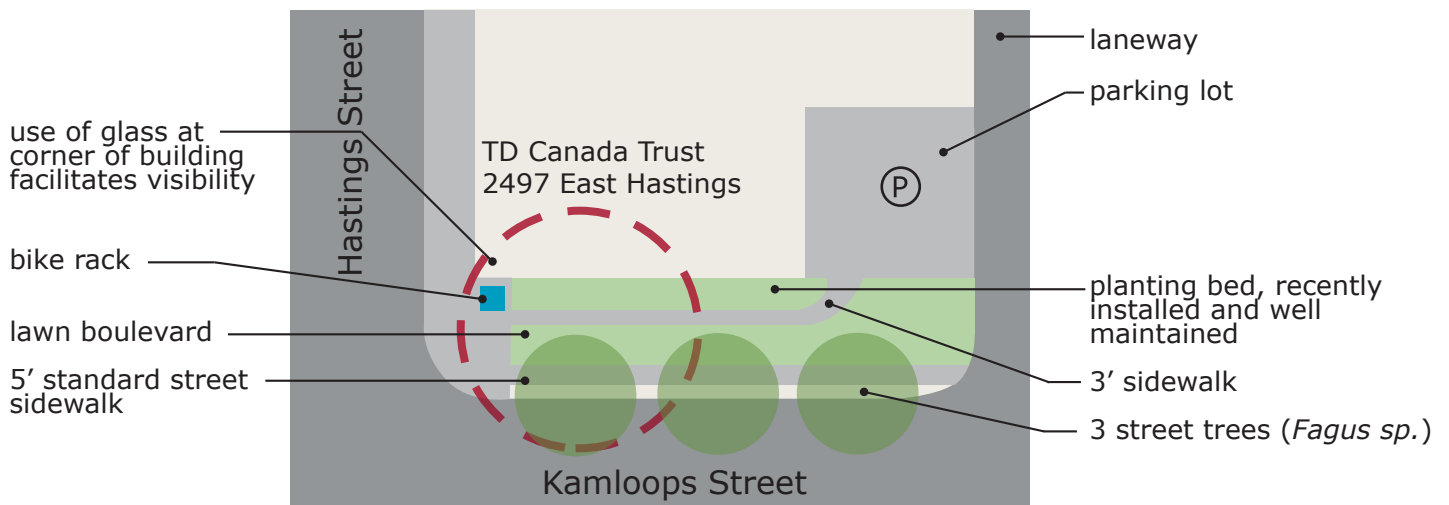


LEGEND

- proposed installation site - phase 1
- bus stop (unsheltered)
- bike rack
- parking lot
- public art
- view corridor

- This intersection has standard 5' paved sidewalks along side streets, with 12' sidewalks (including utility corridor) along Hastings Street.
- Universal access is facilitated with wheel-accessible curbs, audible pedestrian crossing signals, and automated doors for wheelchair users located at the Vancity Credit Union and TD Canada Trust.
- Although there is a predominance of hardscape over softscape, there are vegetated areas on all four corners in a range of states of maintenance.
- Sightlines to the North Shore mountains are partially obscured by street trees and buildings.

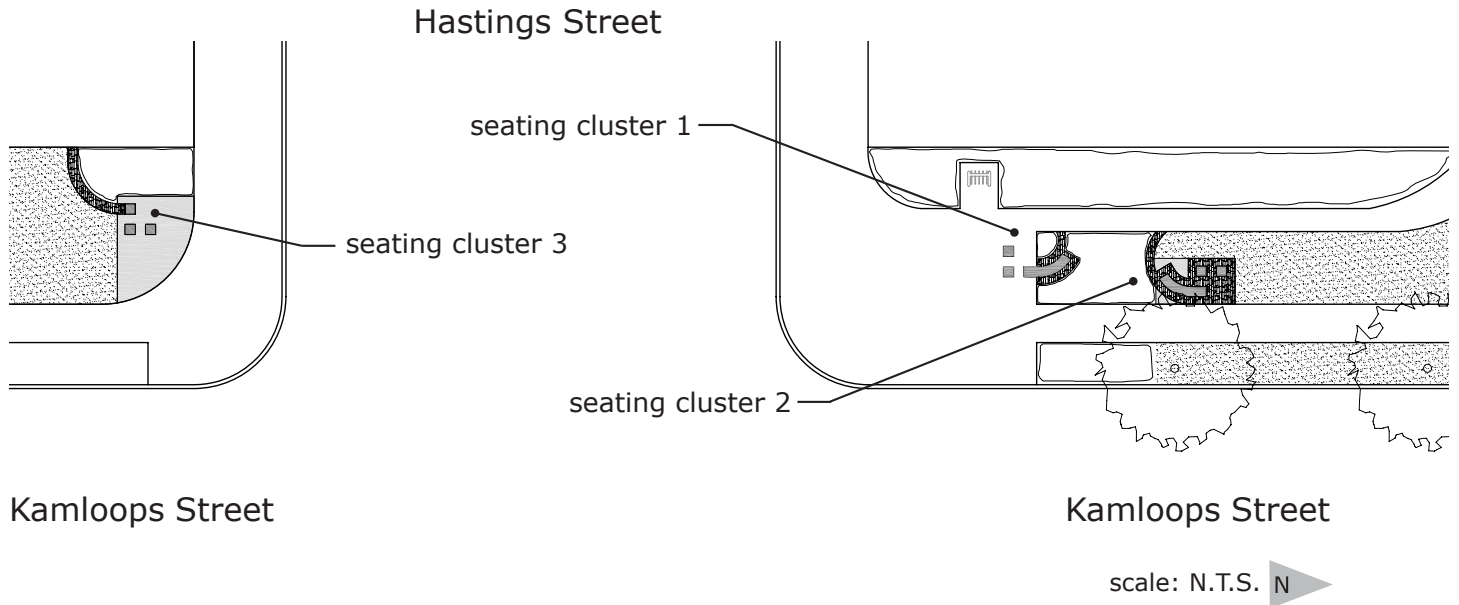
N
scale: N.T.S.



N
scale: N.T.S.

PROPOSED SITE DESIGN

With Public Art Installation



This will be a multi-phase installation of seating areas that incorporates and reflects local history, engages the local neighbourhood, and enhances the aesthetics of the community.

Sculptural Seating Benches - Details

- tiles inset into the benches and cubes will have text reflecting stories gathered from the local community, reflecting its history
- curved, ramping form of the benches inhibits public sleeping
- cobblestones recycled from the neighbourhood form a banding detail that provides a hardscape surface at the base of the seating benches and cubes to prevent erosion, defines the borders of planted areas, and visually invites one into the space
- the cubes and the level portion of the ramped benches are to be 18"-20" ht., or standard seating height
- durable, long-lasting materials, including concrete and glazed brick
- vandal - resistant coating

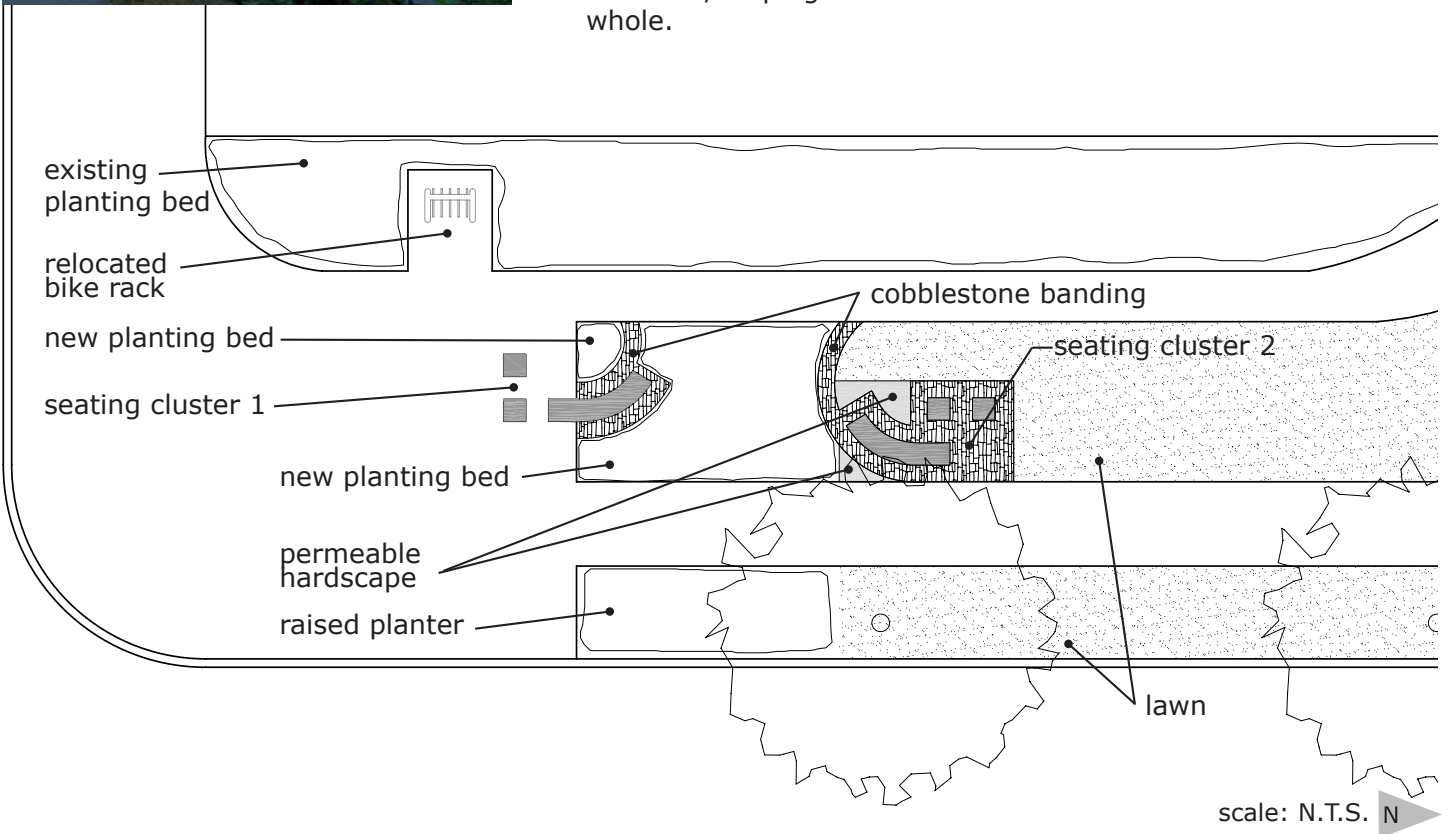
PROPOSED SITE DESIGN

With Public Art Installation - Phase 1



Phase 1

- Two seating clusters will be installed at the NW corner of Hastings and Kamloops Street. The seating areas are composed of curved, ramping benches with individual cubes.
- The first cluster of seating is oriented towards the bustling Hastings Street corridor, and primarily serves the pedestrian shopping community.
- The second cluster is set back from Hastings Street, oriented towards the residential neighbourhood and the view to the mountains.
- A banding detail of recycled cobblestones defines edges and visually invites people into the space
- A new garden bed with low plantings provides a buffer between the seating area and the busy corridor, while maintaining clear sightlines in all directions
- The planting bed visually links the installation with the existing garden bed running parallel to the building, and it deters skate and cycle use around the seating areas
- A portion of lawn in the utility corridor has eroded completely due to pedestrian traffic. A raised planter will be installed in this area, helping anchor the corner installation as a coherent whole.



PROPOSED SITE DESIGN

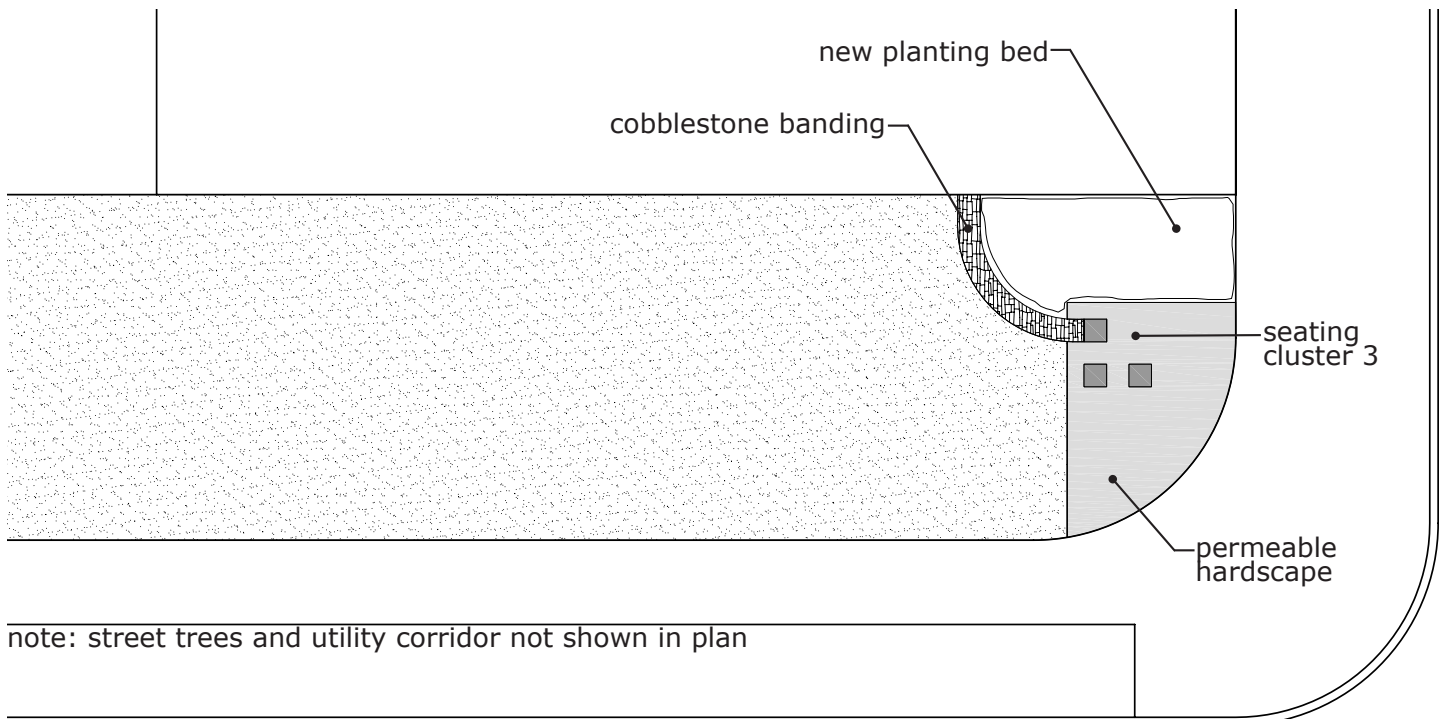
With Public Art Installation - Phase 2



Phase 2

Elements of Phase 1 will be extended across the street in order to visually bridge across Hastings corridor to help anchor the public identity of the intersection.

- A third seating cluster will be installed at the SW corner of Hastings and Kamloops Street. The seating area will be composed of three additional cubes.
- A banding detail of cobblestone and a new planting bed will likewise reflect elements of phase 1 and help form a coherent identity
- A mural composed of graphic elements in silhouette form against a simple, coloured background will be painted on the wall of the Money Mart and TD Bank.
- The murals will create a key vertical element to the installation, visually accessible to vehicular traffic and enhancing the linkages across the intersection.



scale: N.T.S. N

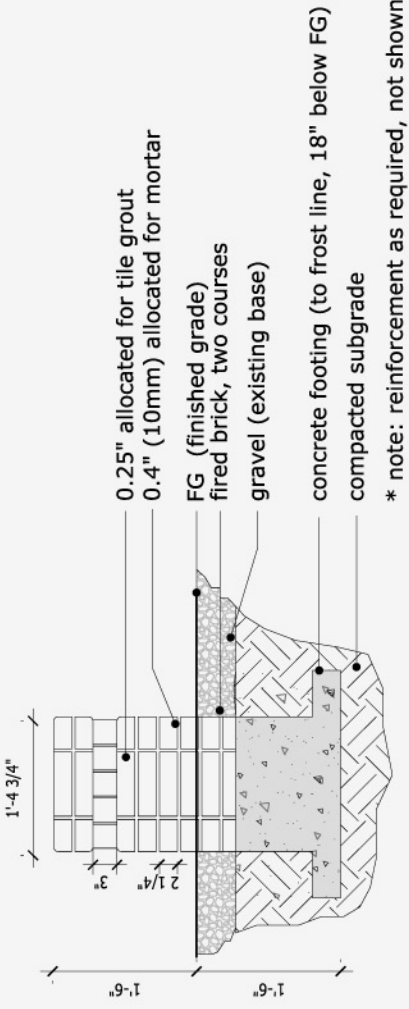


Hastings-Sunrise Public Realm Subcommittee

Implementing the Community Vision

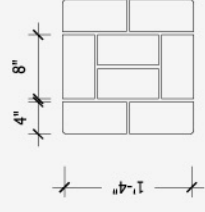
Appendices and Attachments:

Appendix B: BenchMark Detail Design (September 2007)



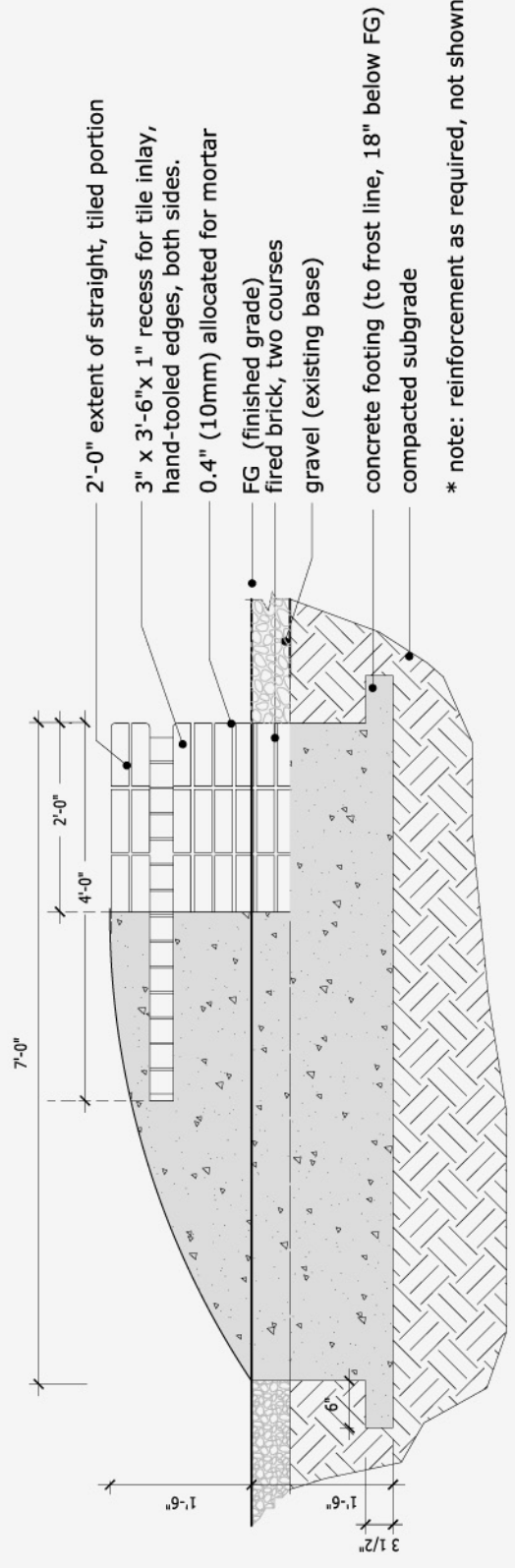
1
L1
Cube: East -West Elevation View

SCALE 1/2" = 1'



2
L1
Cube: Plan View

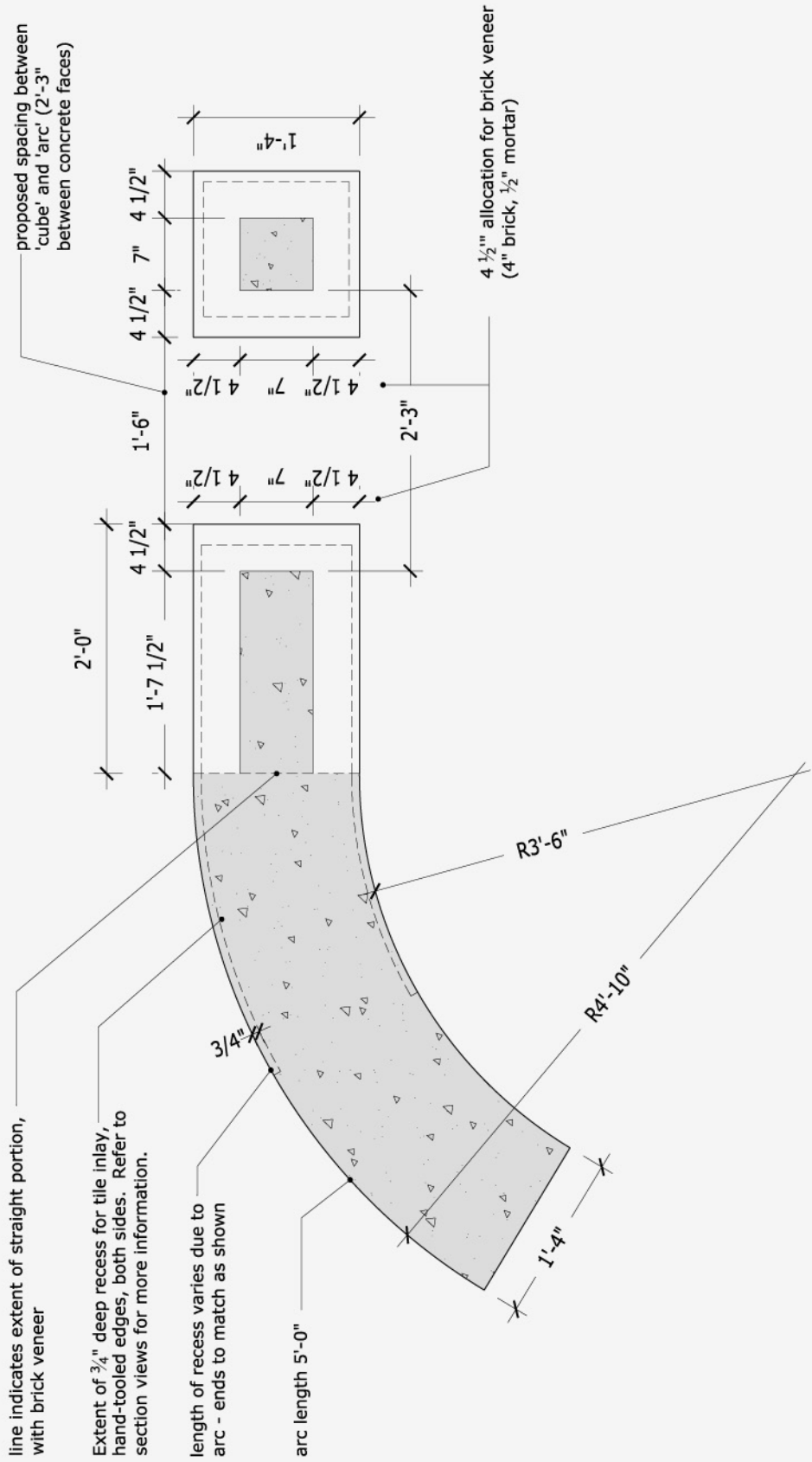
SCALE 1/2" = 1'



3
L1
Bench East-West Elevation View

SCALE 1/2" = 1' 2007.08.27 REVISED AS PER VSB AMENDMENTS

Note: Concrete to be stained Solomon #920 'Onxy'



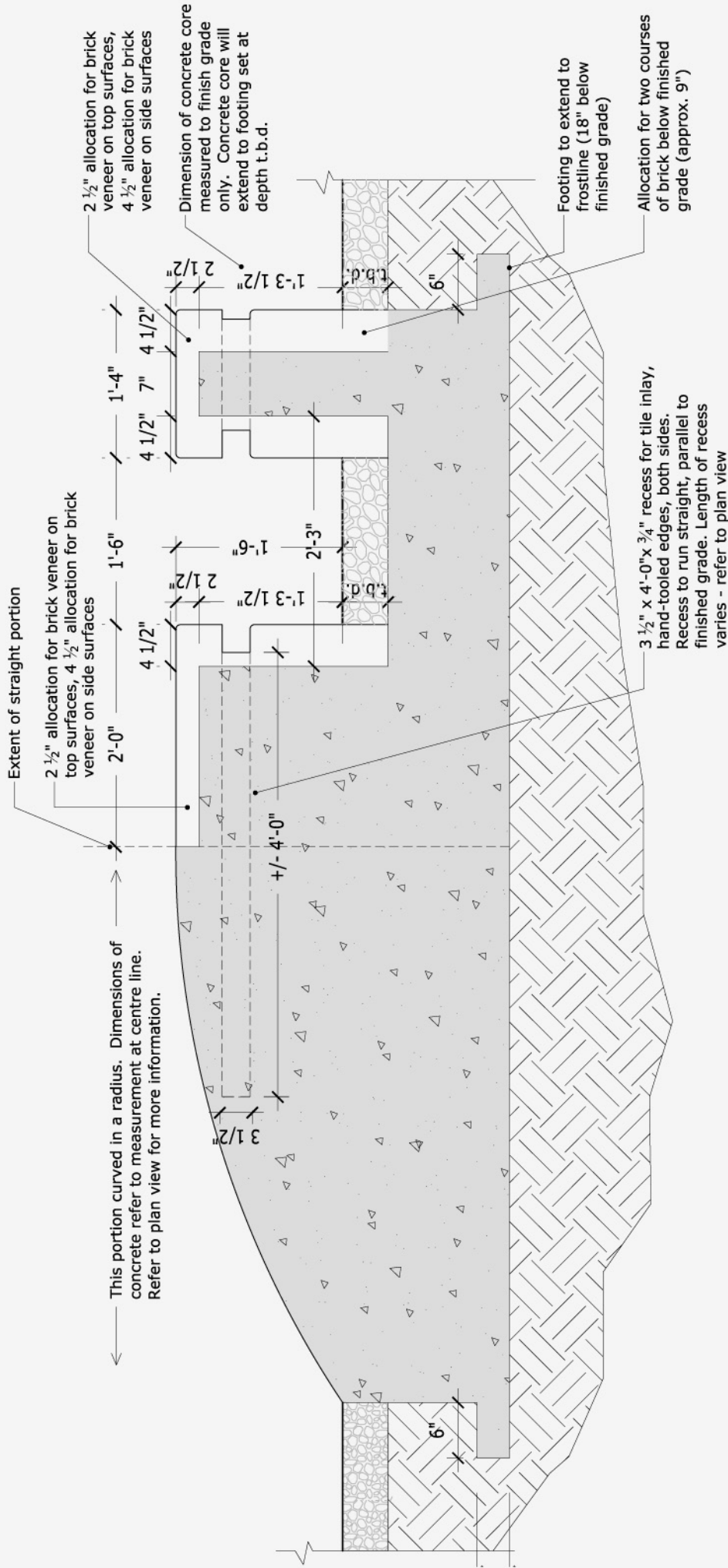
4
L1

7' Bench and Cube: Plan View with Concrete Core

2007.08.27 REVISED AS PER VSB AMENDMENTS

SCALE 3/4" = 1'

Note: Concrete to be stained Solomon #920 'Onxy'



7' Bench and Cube: Section View with Concrete Core

SCALE 3/4" = 1'

2007.08.27 REVISED AS PER VSB AMENDMENTS

5
L1



Hastings-Sunrise Public Realm Subcommittee

Implementing the Community Vision

Appendices and Attachments:

Appendix C: Letters of Support (October 2007)

1. Hastings Community Association
2. Hastings Sunrise City Plan Committee
3. Hastings North Business Improvement Association

HASTINGS COMMUNITY ASSOCIATION

INCORPORATED 1934

OPERATING THE

Hastings Community Centre

IN CONJUNCTION WITH THE VANCOUVER BOARD OF PARKS AND RECREATION



October 29, 2007

To Whom It May Concern:

On behalf of the Board of Directors of Hastings Community Association, I am pleased to write in support of the Benchmark proposal to install sculptural benches on Kamloops Street at Hastings. This project, which is the result of two years of consultation with neighbours and the local business community, will answer several aspects of the Hastings-Sunrise Community Vision document, which called specifically for more public art, the creation of inviting public spaces on the wide side streets, and streetscape improvements, including street furniture. As well, the project will connect with and reinforce other public art projects in the neighbourhood including the story benches at Hastings School and the series of Our Community Story mosaics to be installed at points along Hastings Street, creating a cohesive visual 'brand' that is unique to our area.

We believe that the Benchmark project, from consultative planning phase, through hands-on participation by community members and local businesses in implementing the design, to final creation of an inviting respite area away from the noise and bustle of Hastings Street perfectly meets the criteria for a Neighbourhood Matching Fund grant.

Sincerely,

A handwritten signature in black ink, appearing to read 'Eric Harms', written over a horizontal line.

Eric Harms
President
Hastings Community Association



October 30, 2007

Vancouver Board of Parks & Recreation
Neighbourhood Matching Fund
2099 Beach Avenue
Vancouver, BC V6G 1Z4

RE: Vancouver Parks Board Neighbourhood Matching Fund

On behalf of the Hastings-Sunrise CityPlan committee, please accept this letter of endorsement for the Hastings-Sunrise Public Realm subcommittee group which has applied for the Vancouver Parks Board Matching Fund. The Public Realm group is comprised of community volunteers working to implement the Hastings-Sunrise vision directions regarding public realm improvements in the Hasting-Sunrise area.

We feel that this application for the installation of sculptural benches on Kamloops Street at Hastings Street (Benchmark) will serve to assist in the accomplishment of the Hastings-Sunrise Vision approved directions noted below:

18.10 Improve the Area's Appearance

The appearance of the Hasting Sunrise/North shopping area should be improved through efforts of private owners, the BIA, and the City (e.g. street furniture, murals, public art, sculpture, bike racks, public notice boards, directory to the area, drinking fountains). Special streetscape treatment and 'branding' should be implemented to enhance the identity, cultural heritage, and viability of the shopping area.

18.13 Better Utilize Wide Side Streets

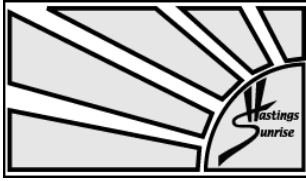
The extra wide (100') road allowances of side streets (such as Kamloops, Penticton, Slovan, Kaslo) are a major opportunity to create public spaces, to bring greater amenity and greening to the area, and to provide a respite from the noise of Hastings. Emphasis should be placed on the development of these as public spaces, rather than seeking public space in larger developments.¹

We encourage the Parks Board to select this group for the matching funds grant as we have community support and willing volunteers but no funds to make the approved City-Plan directions a reality.

Yours truly,

Haida Lane, Chairperson
Hastings-Sunrise CityPlan Committee

¹ <http://vancouver.ca/commsvcs/planning/cityplan/Visions/hs/pdf/neighcentres.pdf>



Hastings North Business Improvement Association

October 31, 2007

Vancouver Board of Parks and Recreation
Neighbourhood Matching Fund
2099 Beach Avenue
Vancouver, BC, V6G 1Z4

Re: Hastings-sunrise BenchMark Project Neighbourhood Matching Fund Request

Dear Board Members;

The Hastings North Business Improvement Association (BIA) is proud to lend their support to the installation of sculptural ceramic and brick benches at Kamloops and Hastings Streets. The BIA has worked with the community in the formation of this project and is continually working to improve the public realm of the area. We will continue to work with the community to assist in the installation and maintenance of this project. We believe that it will bring a visual and functional improvement to the area both at this corner and the overall BIA district. In its current form the project will include the BIA colours in order to maintain cohesiveness in the area which we believe is very important. In addition it will provide a community public meeting place and take advantage of the wide corner and the northern views.

The BIA looks forward to working with the community as a member of the Public Realm Committee and as an active participant in the upcoming Neighbourhood Centres Program. We recognize that one of the issues once the benches are installed is continued maintenance. The BIA has a number of programs including graffiti removal and garbage pickup that include and will continue to include this area. Consequently, we will ensure that graffiti is removed and garbage pickup does occur. In addition, the benches are designed to minimize graffiti as well as other forms of misuse.

Yours sincerely,

HASTINGS NORTH BUSINESS IMPROVEMENT ASSOCIATION

Patricia Barnes, Executive Director



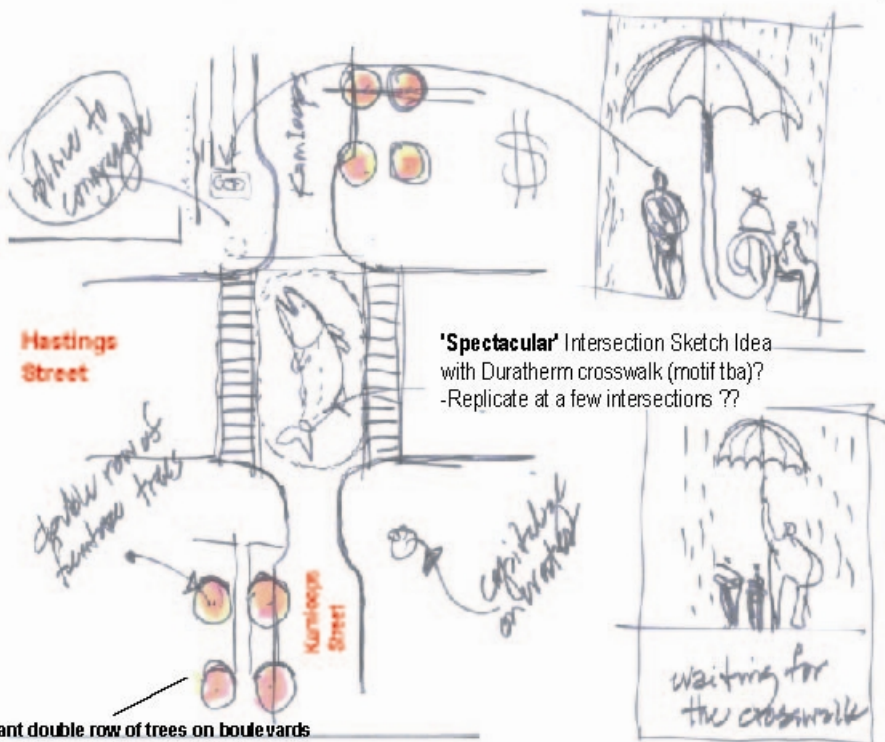
Hastings-Sunrise Public Realm Subcommittee

Implementing the Community Vision

Appendices and Attachments:

Appendix D: Community Charrette - Sketching the Vision (June 2006)

Hastings-Sunrise Public Realm Subcommittee Hastings & Kamloops Sketch Ideas for Intersection



'Spectacular' Intersection Sketch Idea with Duratherm crosswalk (motif tba)?
-Replicate at a few intersections??

Plant double row of trees on boulevards
-plant flowers around trees

Public Art Feature on NW corner
-functional art (galvanized steel?) that can also be used to gather; provide relief from rain/sun as people wait for the bus
-Next Step: Apply for public art grant in '06



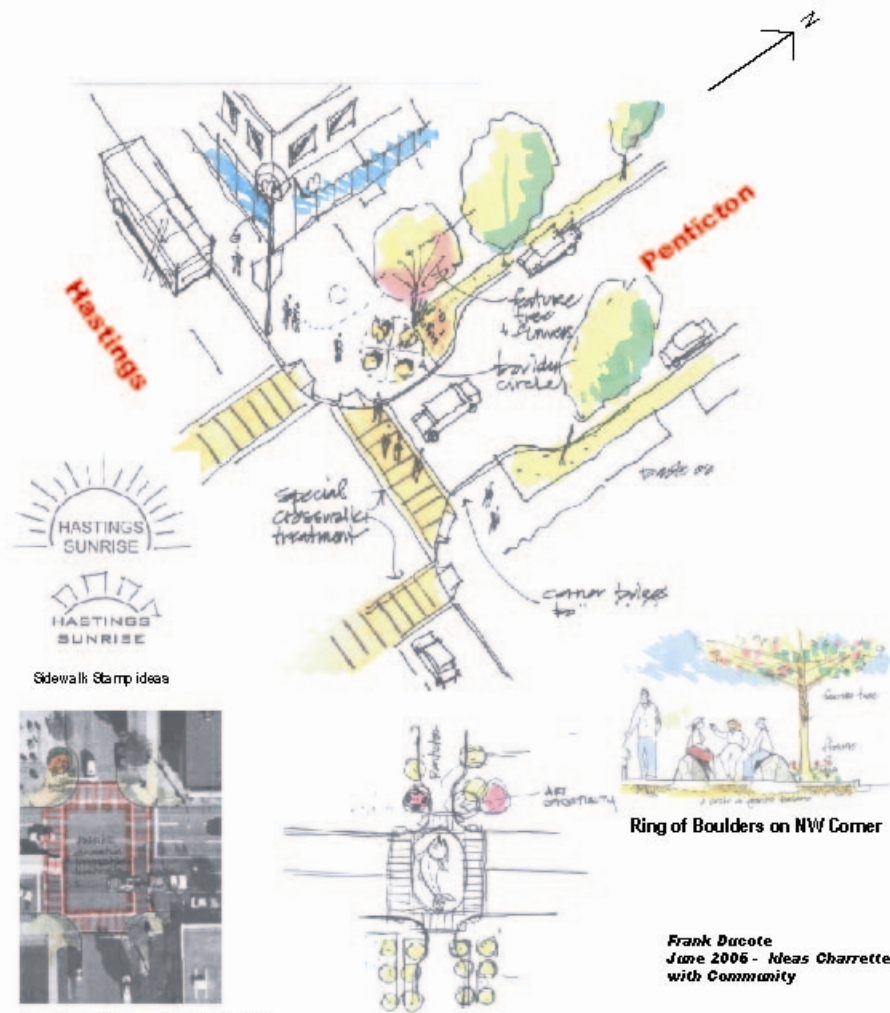
Example of Duratherm Crosswalk in Victoria, BC
-low cost, plenty of designs available



Corner Bulges
(width of side street is 33ft)

**Frank Ducote
June 2006 - Ideas Charrette
with Community**

Hastings-Sunrise Public Realm Subcommittee Hastings & Pentiction Sketch Ideas for Intersection



Sidewalk Stamp ideas

Ring of Boulders on NW Corner

Frank Ducote
June 2006 - Ideas Charrette
with Community

'Spectacular' Intersection Sketch Idea with Duratherm crosswalk (motif tba)?
-Replicate at a few intersections ??

- Plant double row of trees on boulevards
- plant around trees
 - corner bulges on sidestreets



Hastings-Sunrise Public Realm Subcommittee

Implementing the Community Vision

Appendices and Attachments:

Appendix E: Reviewing installations in other communities (April 2007)

Installations in Other Communities (April 2007)

North Burnaby ~ Hastings Street



Side street with bulges, paved & dirt boulevards, diagonal parking



Large set back in front of commercial businesses



Bike rack



Side street with bulges, dirt boulevards, diagonal parking



Furniture, garbage can & commercial advertising



Landscaping



Attractive street sign



Plaza in commercial area



Bus stop, light fixture & large sidewalk set back



Mosaic in commercial-residential plaza



Wall mural



Mosaic in commercial-residential plaza

North Burnaby ~ Gilmore & Lougheed Sky Train Station



Above left: Streetscape with wide side walks, large set backs, attractive lighting & landscaping

Above right: Attractive lighting

Left: Newspaper boxes centrally & compactly organized



South Vancouver ~ Fraser Street



Attractive sidewalk stamp



Side street rock bench



New attractive sidewalks, landscaping, traffic bulges. Some plants trampled, beds contain garbage





Side street with new bulges, landscaping



Bus stop, garbage can, trampled landscaping



Off street parking lot with mature, lovely plants but landscaping not well maintained and garbage present



Children's art project on fence in off street parking lot

West Side of Vancouver ~ Kerrisdale



Community banners



Attractive sidewalk, street furniture, landscaping



Bus stop, historical street art work



Historical street art work bench



Very clean, attractive landscaping at **this** McDonald's. No garbage bins overflowing onto pavement or lack of plants!



Community sign, attractive fencing, landscaping



Very attractive staged landscaping. Nice sidewalks, although quite narrow in spots for pedestrian passage



Plaza with clock

West Side of Vancouver ~ South Granville



Attractive historical street sign



Very attractive side street furniture, landscaping



Large set back with attractive street furniture, no street bulges



Community banner



Bus stop, large pedestrian set back



Clock at major intersection



Bus stop, large pedestrian set back



Newspaper boxes neatly organized



Left: Community history post, not damaged with graffiti.