

Application for a BC150 Years Grant - February 22, 2008

Applicant Information:

Hastings Community Association
3096 E. Hastings St.
Vancouver, BC, V5K 2A3

Contact (and officer responsible for the application):

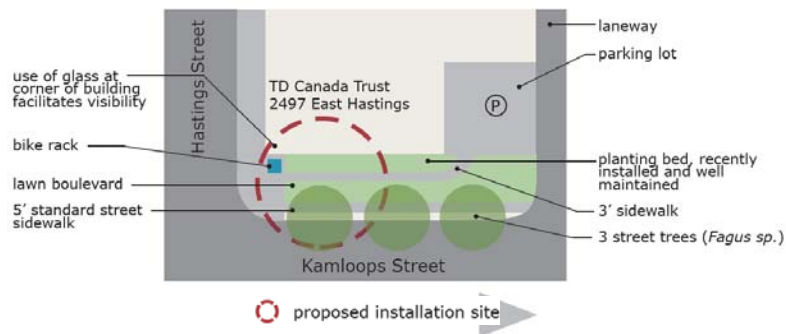
Paul Calderhead, Executive Director
Email: paul.calderhead@vancouver.ca
Phone (daytime): 604.718.6227

Submitter (and second officer responsible for the application):

Eric Harmes, President
Email: elharmes@shaw.ca
Phone: 604.255.9458

Project Background:

The *BenchMark* project is the installation of six sculptural seating benches at Kamloops and Hastings, composed of concrete, hand glazed brick and story tile. *BenchMark* is a multi-year collaboration of community volunteers and community groups (Hastings North BIA, Hastings Community Association, Hastings-Sunrise Public Realm Subcommittee, and Media UnDefined).



BenchMark plans extensive community involvement for sharing and recording of community history from the living memory of area residents, preparing the clay tile with the text reproduction of the history (story tile), hand glazing of the brick, and installation of the tile and brick. The project creates public art that records the history of the area and its residents, and makes the history accessible to a younger generation.

Appendix A and B include the proposal details, appendix C includes letters of support.

Project Schedule:

The public art installation is scheduled to begin in June, 2008. Numerous other activities are planned to encourage and expand community participation in this project:

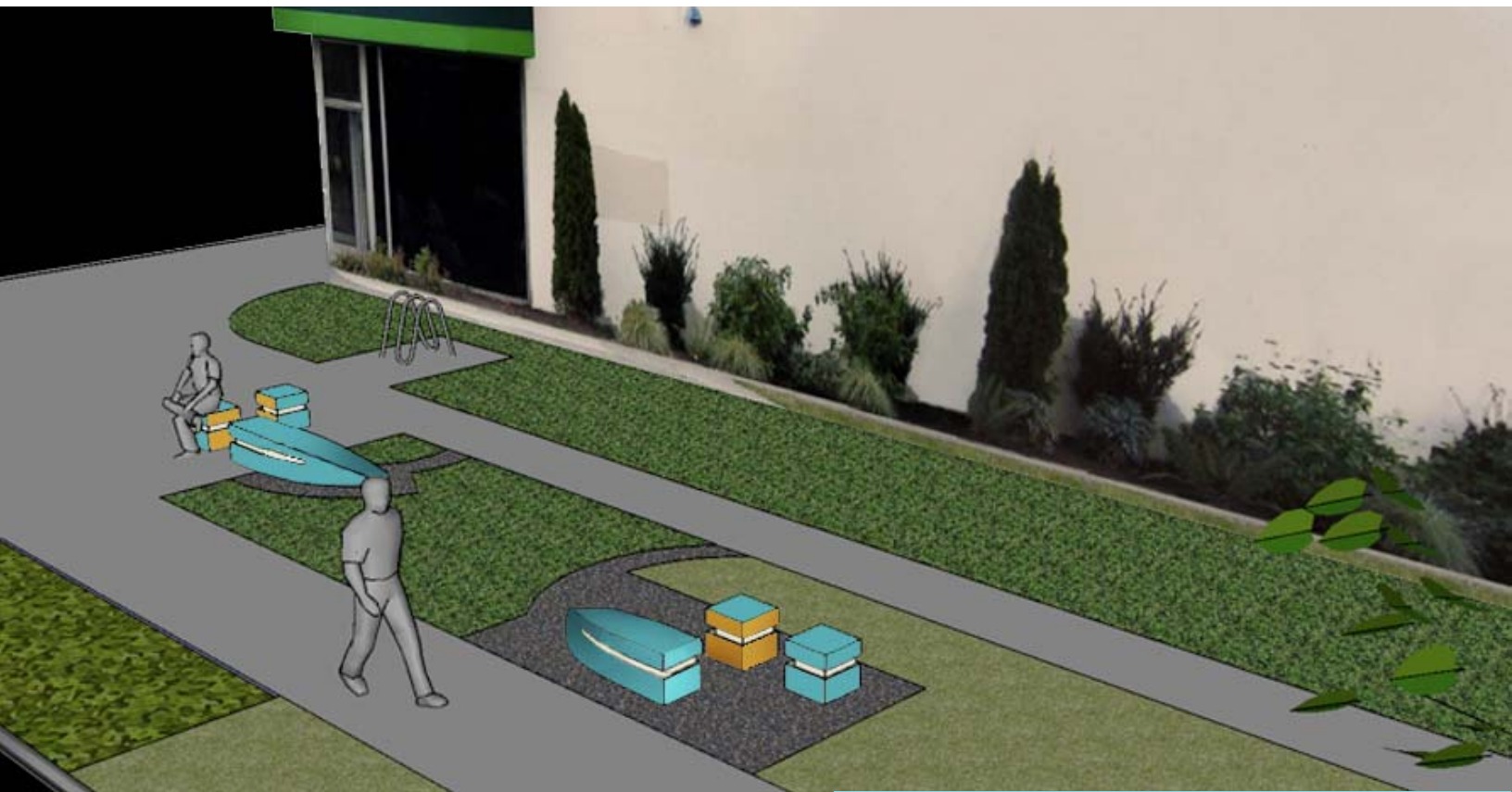
- **October 2007 - March 2008: Fundraising activities**
 - Researching and applying for grants from funding organizations
 - Soliciting donations from businesses and organizations in our community
- **November 2007 - May 2008: Project promotion activities**
 - Prepare promotional materials "how to get involved"
 - Plan and conduct three promotional events "what's going on - how to get involved"
 - Sign up volunteers for future activities
- **Feb 2008 - May 2008: Pre-installation community engagement activities**
 - All the following activities are open to community members. The activities will be promoted to identify new volunteers. Previously identified volunteers will be contacted and invited to participate.
 - Conduct the "clean the cobblestones" event to prepare, sort, select and store the donated cobblestones.
 - Conduct the "story tile" community workshop to develop the stories to put on the tiles.
 - Conduct two "final project planning" workshops to work out the nitty gritty installation design details and a work schedule, volunteer sign up, etc.
 - Conduct the "brick glazing and firing" event to prepare the bricks for installation.
 - Conduct the "story tile decaling, glazing and firing" event to prepare the story tiles for installation.
- **June 2008 - July 2008: Installation activities**
 - Conduct the installation of the benches, cobblestones and garden. Community members (recruited through promotion and pre-installation activities) will assist tradesmen and, where feasible, conduct the installation work, as per the schedule developed in the "final project planning" workshops.
- **August 2008 - Sept 2008: Post Installation promotion activities**
 - Prepare the "project history" document, and other promotional materials that explain the project, and emphasize how to "get involved".
 - Publicize the installation through media and distribution of printed materials

Project Budget:

Project Budget and BC150 Years Grant Request			
Project Budget		Funding Requests	
Artist Fees	\$13,200	Hastings North BIA (approved November 2007)	\$5,000 (approved)
Concrete formwork, materials, pouring	\$12,000	Vancouver Parks Board Neighbourhood Matching Fund (approved November 2007)	\$10,000 (approved)
Relocation of bike rack with new concrete pad	\$1,000	Total Requested from BC150 Years Grant	\$ 10,000
Concrete cutting	\$750	Vancouver Foundation (application date Feb. 28)	\$11,000
Glaze Materials	\$800	TD Bank Financial Group (application date Mar. 28)	\$12,860
Studio space & firing costs	\$500		
Tiles & Decals	\$600		
Bricklaying (Materials, Delivered)	\$1,200		
Bricklaying (Labour)	\$2,500		
Cobblestone site preparation and installation (Labour)	\$2,500		
Bedding (Plants, Delivered)	\$2,000		
Bedding (Installation)			
Soil (Delivered and Graded)	\$1,000		
Lawn (Delivered and Installed)	\$1,000		
Project Promotion and Recruitment (materials, printing, advertising costs)	\$2,000		
Contingency (20% of 39050)	\$7,810		
Total Cost of the Project	\$ 48,860		

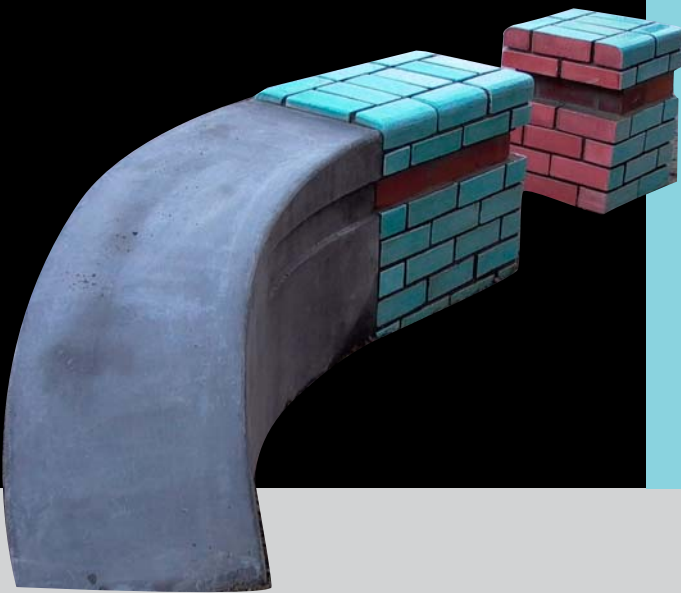
Appendices and Attachments:

Appendix A: Benchmark Poster and October 2007 Proposal



benchmark

sculptural seating for the heart of hastings-sunrise



MEDIA UNDEFINED

Media Undefined is a non-profit organization dedicated to fostering community and collaborative engagement through cross-disciplinary artistic practices. Their projects employ innovative community engagement strategies that connect socially, economically, and culturally diverse communities with practicing professional artists. *Media Undefined* strives to achieve artistic excellence by creating projects in which public participation and artistic creation are mutually interdependent.

PROJECT DESCRIPTION

BenchMark is a public art seating area developed by artists Alison Maddaugh and Jamie Robson of *Media Undefined*, in collaboration with Hastings-Sunrise community groups: Hastings Community Association, Hastings North Business Improvement Association, and Hastings-Sunrise Public Realm Sub-committee.

BenchMark draws on the energy and visual language of related neighbourhood art projects led by *Media Undefined*: *Our Community Story*, a living history project about Hastings-Sunrise (2005); and *Trailing Tales*, a sculptural seating area at Hastings Elementary School (2007).

BenchMark will engage local residents in the creation of a public gathering place at the northeast corner of East Hastings Street at Kamloops, in the heart of the Hastings-Sunrise neighbourhood. The project proposes to enhance an existing green space with sculptural seating and tiles featuring historical anecdotes, framed by cobblestone and new planting beds.

MATERIALS AND INSTALLATION

All materials and installation methods are safe, long lasting, and suitable for participation from all age groups:

- **Glazed Brick:** Unfired clay brick sculpted and glazed to produce a form with rounded edges and a smooth, vibrant, and durable surface free of sharp or rough edges.
- **Story Tiles:** Industrial strength frost resistant ceramic tiles printed with anecdotal text and embedded into the sides of the bench forms.
- **Concrete:** Coloured concrete provides the curved ramp and secure foundations for the sculptural seating forms.



BenchMark

Synopsis

BenchMark is a public art seating area developed by artists Alison Maddaugh and Jamie Robson, in partnership with the *Hastings Sunrise Neighbourhood's Public Realm Committee*. *BenchMark* will engage members of the local community in the creation of a public gathering place. A multi-phase project, *BenchMark* will be located on the northeast corner of Hastings Street at Kamloops, in the heart of the Hastings Sunrise Neighbourhood.

This interactive project will bring a public face of the social and historical fabric of the community to the street. Drawing on an archive of stories that resulted from *Media Undefined's* 2005 project, *Our community Story** (www.mediaundefined.ca), a selection of historical anecdotes and images about the history of Hastings Street will be inscribed on sculptural seating forms. These colourful, ramped benches and cubes will provide increased opportunities for social interaction, rest, and dialogue, and will aesthetically enhance the neighbourhood streetscape.

Project Description

Originally built in 1885, Hastings Street is one of the earliest established main traffic arteries in and out of the city. While it continues to be one of the busiest east-west traffic corridors in Greater Vancouver, Hastings Street forms the core of the pedestrian-based shopping area in the Hastings Sunrise Neighbourhood. This section of East Hastings Street, from Nanaimo to Kaslo Streets, is characterized by a culture of long established, family-owned businesses. These shops not only serve the local community, but are also destination stores that attract residents from other Vancouver and Burnaby neighbourhoods. Specialty shops such as Polonia Sausage House and Olympia Tailors draw a regular clientele from the lower mainland.

While this is the main shopping district in the area, the street is currently absent of public gathering places and public seating areas.

* Our Community Story was a living history project about the Hastings Sunrise Neighbourhood produced by Media Undefined in 2005. OCS resulted in an audio archive of stories told by residents, about the history of the neighbourhood. For more information go to www.mediaundefeind.ca.



BenchMark will integrate the ideals of *placemaking** into the Hastings Sunrise Neighbourhood. It has been designed as a public destination that will enhance an existing niche of green space, and offer a place to pause along this busy pedestrian corridor.

Through a thorough analysis of East Hastings Street from Nanaimo to Kaslo Streets (see site selection criteria below), the northwest corner of East Hastings Street and Kamloops Street has been identified as the most suitable site for this initiative. Located in the heart of the Hastings Sunrise Neighbourhood, this intersection is one of the busiest in the area. Bustling with local residents, commuters, business people, and shoppers, hundreds of pedestrians pass this intersection each day. In addition, this intersection has good visibility with sight lines that allow for visual access from all directions. This corner as well as the corner adjacent to it have been the site of recent greening and improvements, making the intersection suitable for the installation of public art without extensive redesign of the streetscape. The recent addition of an attractive perennial planting bed at this site has enhanced the streetscape. *BenchMark* will build on these improvements to further develop the qualities of 'place-making' already initiated at this site.

Criteria for Site Selection

The following criteria were taken into consideration in the selection of the proposed site:

- Hastings Sunrise Public Realm Committee requested placement at an intersection;
- The intersection at Hastings and Kamloops Streets has been the site of recent greening and site improvements by two local businesses: Vancity Credit Union, and TD Canada Trust;
- Site reflects an existing balance of hardscape and softscape, which allows for the installation of public art/seating elements without extensive redesign of the streetscape;
- At present this intersection lacks public art;
- Consistent mid to high traffic volume will showcase art within the community;
- The selected corner has good visual access from all directions;
- The addition of a public art and seating installation will not interfere with current circulation patterns and current land use;
- The windowless, 'blank' walls that span the northwest and southwest corners of the intersection provide a prime location for a mural. The mural will provide a key vertical element to the cluster of seating that will visually engage passersby from a distance, and will anchor the intersection as a landmark. By bracketing the Hastings corridor, the mural will add to the visual iconography of the neighbourhood.

* "Placemaking is not just the act of building or fixing up a space, but a whole process that fosters the creation of vital public destinations: the kind of places where people feel a strong stake in their communities and a commitment to making things better. Simply put, Placemaking capitalizes on a local community's assets, inspiration, and potential, ultimately creating good public spaces that promote people's health, happiness, and well being. As our survey responses suggest, this process is essential--even sacred--to people who truly care about the places in their lives." (www.pps.org)



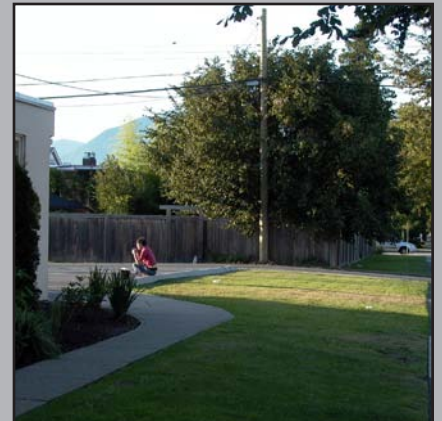
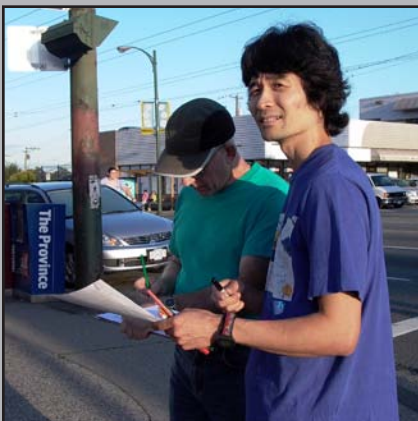
Materials and Installation:

All materials and installation methods will be safe, long lasting, and will be suitable for participation from all age groups:

- Clay brick: Unfired clay brick will be sculpted to produce a ramped, curved form with rounded edges. All exterior brick surfaces will be glazed to produce a smooth, vibrant and durable surface free of sharp or rough edges.
- Ceramic Tile: Industrial strength, frost resistant porcelain tile will be embedded into the sides of the bench forms.
- Decals: Ceramic decals printed with anecdotes and archival imagery will be applied to ceramic tiles.
- Coloured Concrete will be used to form a secure foundation, and internal core for the benches.

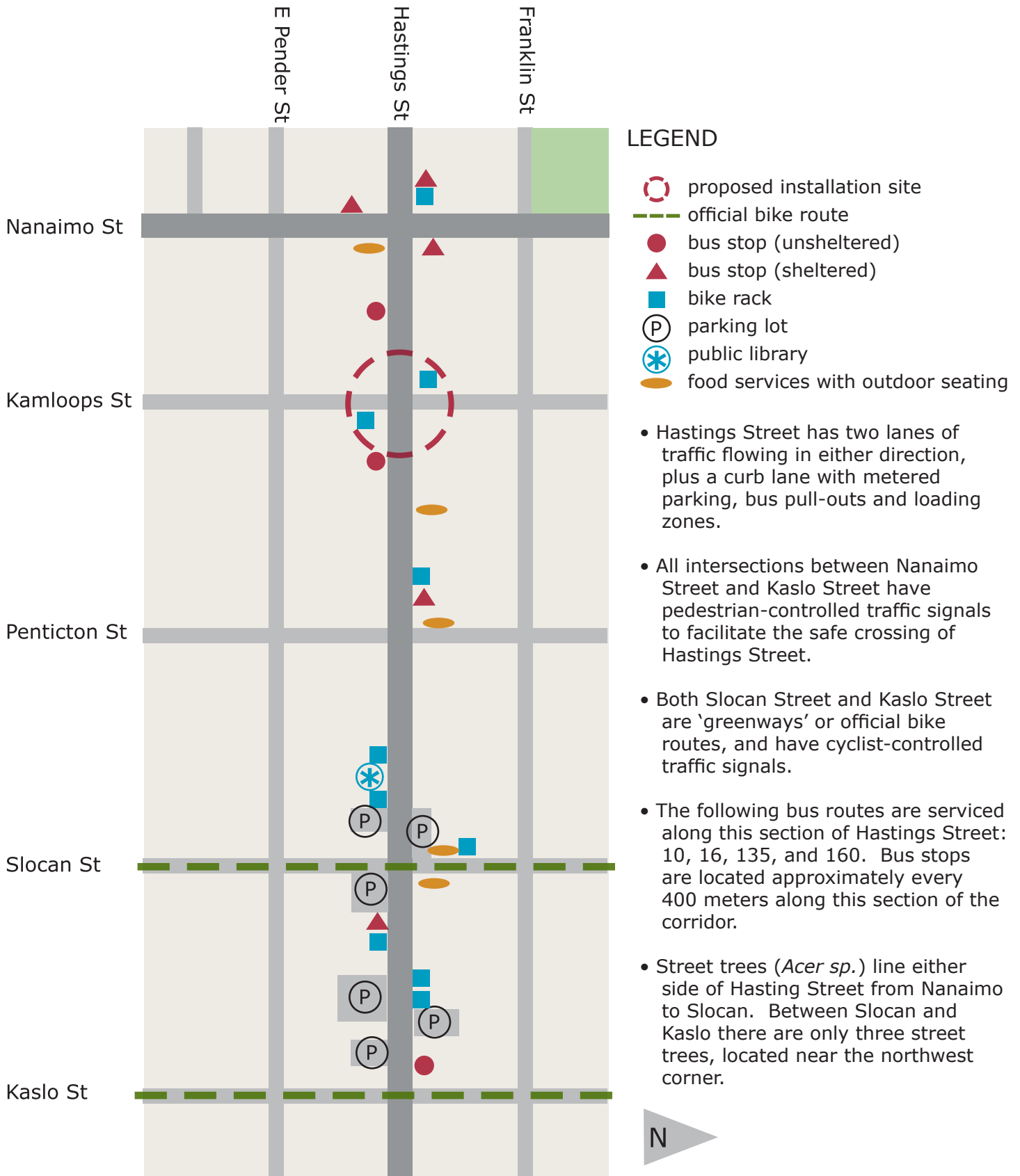
Colour Pallet

A pallet of colours will be selected by the artists, in consultation with the Hastings Sunrise Public Realm Committee and the Hastings North Business Improvement Association.



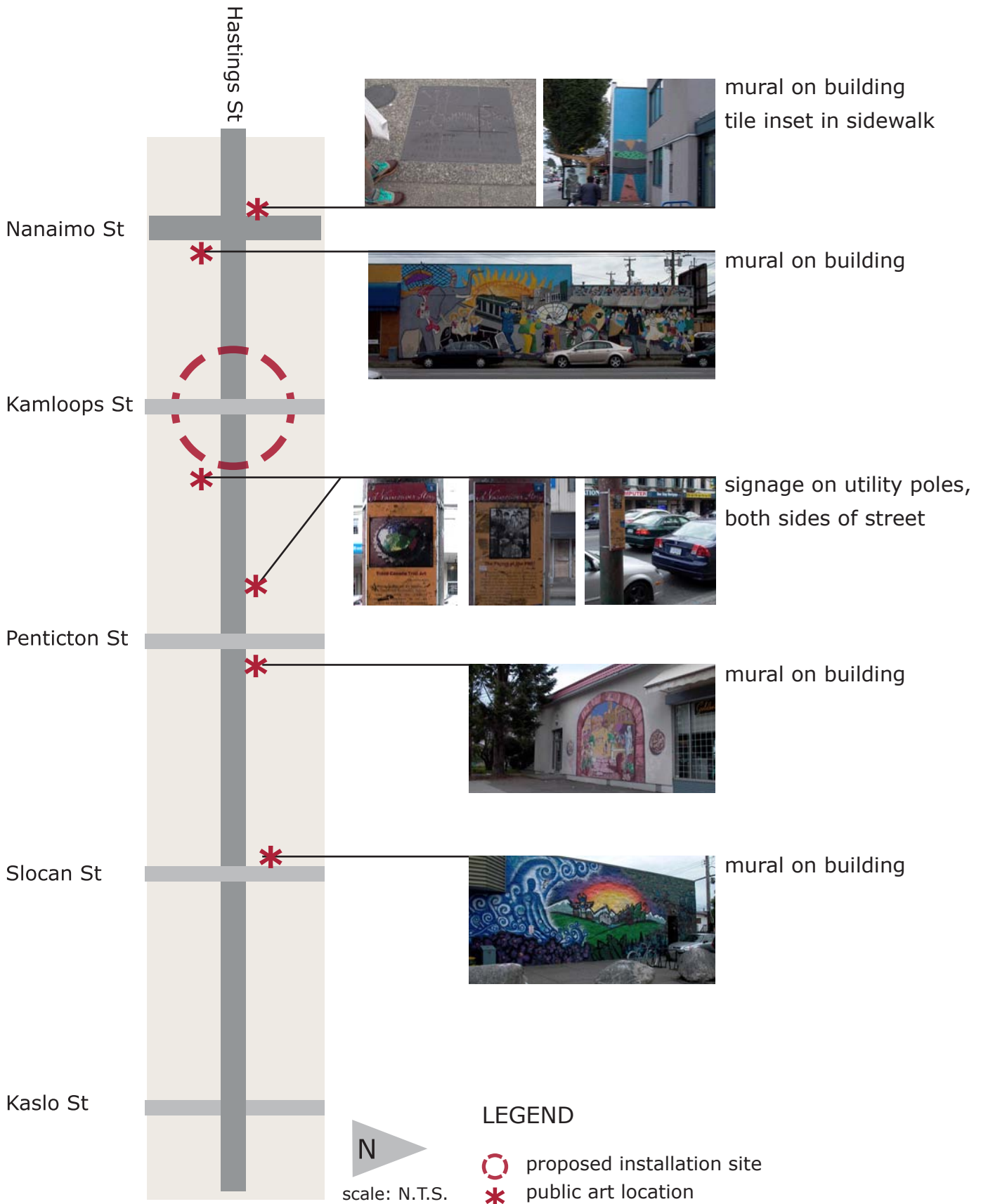
HASTINGS STREET CORRIDOR ANALYSIS

Nanaimo Street to Kaslo Street



PUBLIC ART INVENTORY

Hastings Street corridor, Nanaimo Street to Kaslo Street



INTERSECTION ANALYSIS

Kamloops Street at Hastings Street

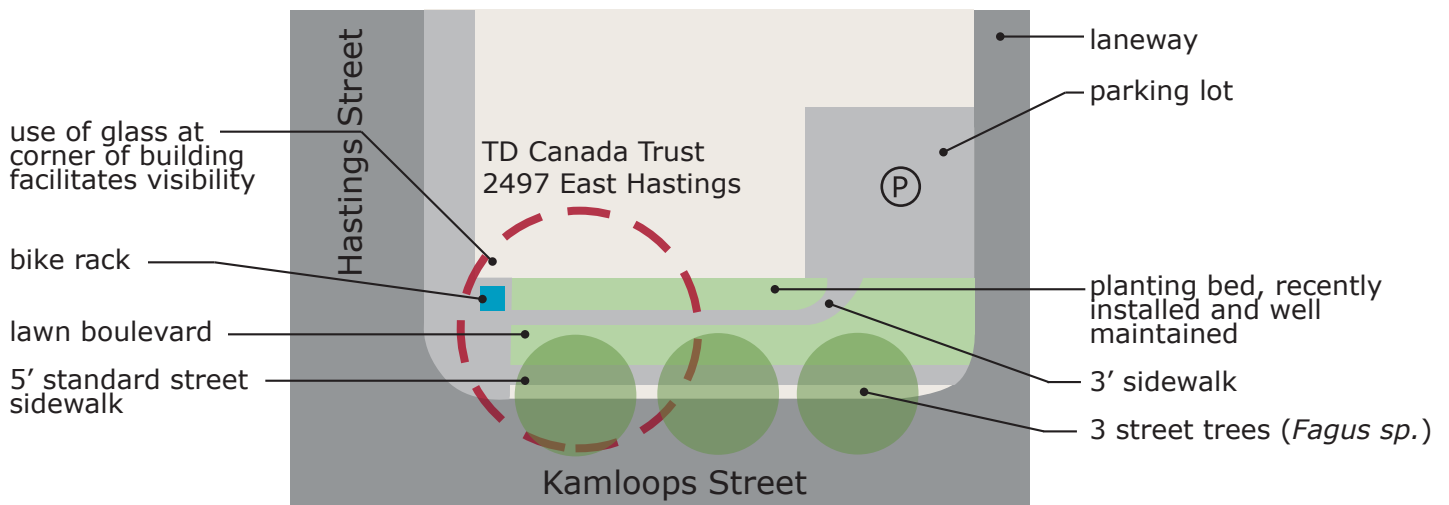


LEGEND

- proposed installation site - phase 1
- bus stop (unsheltered)
- bike rack
- parking lot
- public art
- view corridor

- This intersection has standard 5' paved sidewalks along side streets, with 12' sidewalks (including utility corridor) along Hastings Street.
- Universal access is facilitated with wheel-accessible curbs, audible pedestrian crossing signals, and automated doors for wheelchair users located at the Vancity Credit Union and TD Canada Trust.
- Although there is a predominance of hardscape over softscape, there are vegetated areas on all four corners in a range of states of maintenance.
- Sightlines to the North Shore mountains are partially obscured by street trees and buildings.

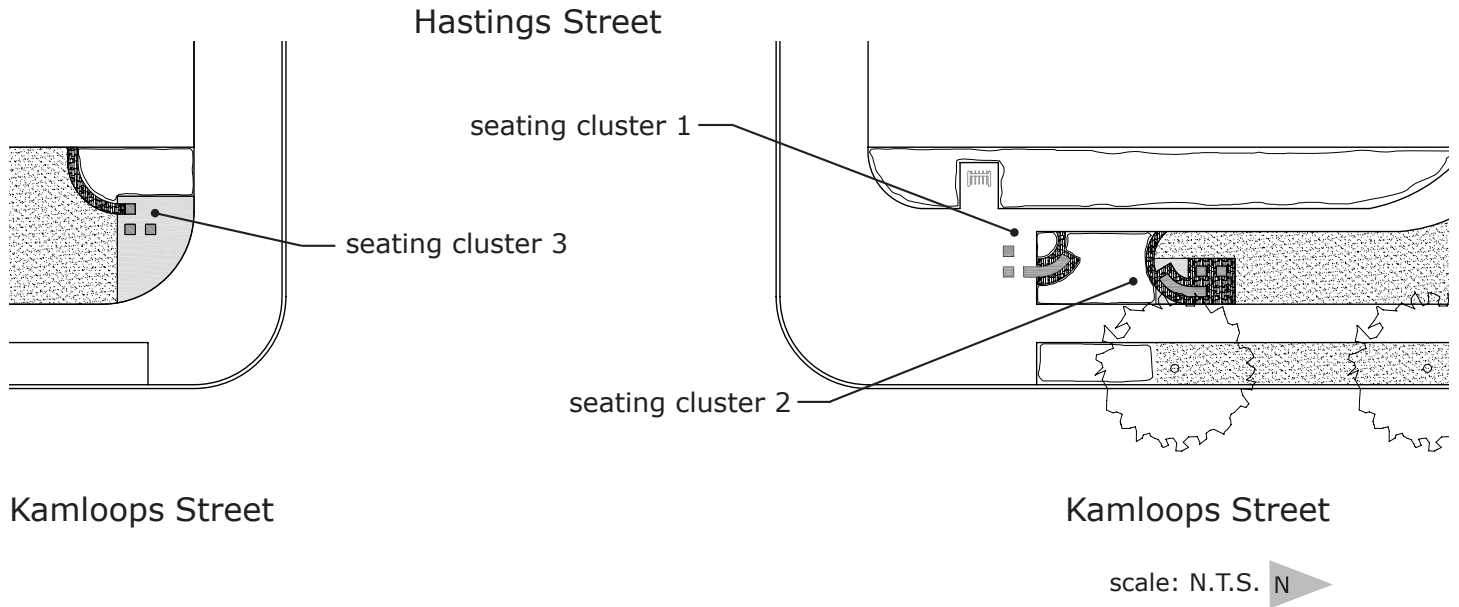
N
scale: N.T.S.



N
scale: N.T.S.

PROPOSED SITE DESIGN

With Public Art Installation



This will be a multi-phase installation of seating areas that incorporates and reflects local history, engages the local neighbourhood, and enhances the aesthetics of the community.

Sculptural Seating Benches - Details

- tiles inset into the benches and cubes will have text reflecting stories gathered from the local community, reflecting its history
- curved, ramping form of the benches inhibits public sleeping
- cobblestones recycled from the neighbourhood form a banding detail that provides a hardscape surface at the base of the seating benches and cubes to prevent erosion, defines the borders of planted areas, and visually invites one into the space
- the cubes and the level portion of the ramped benches are to be 18"-20" ht., or standard seating height
- durable, long-lasting materials, including concrete and glazed brick
- vandal - resistant coating

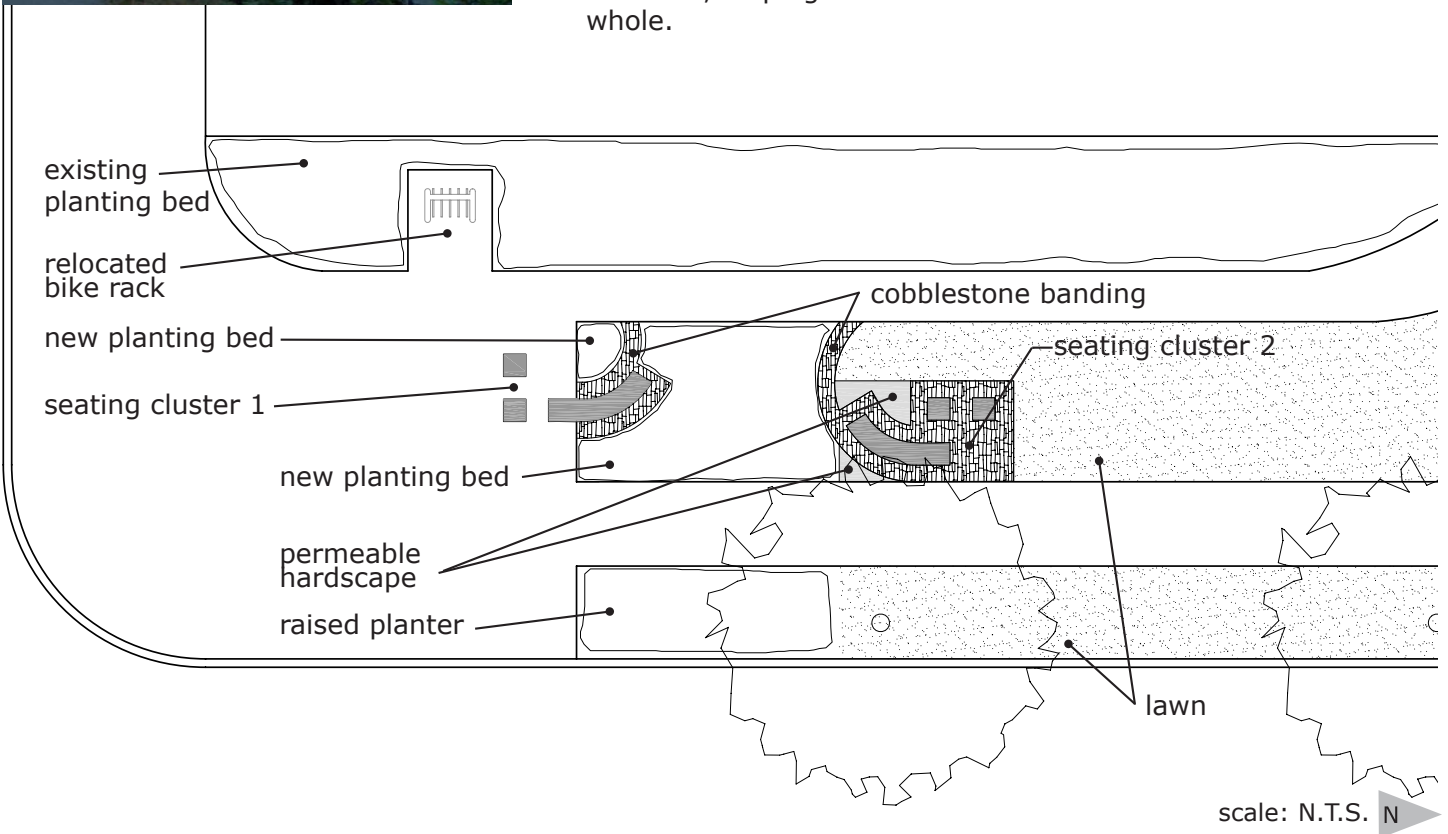
PROPOSED SITE DESIGN

With Public Art Installation - Phase 1



Phase 1

- Two seating clusters will be installed at the NW corner of Hastings and Kamloops Street. The seating areas are composed of curved, ramping benches with individual cubes.
- The first cluster of seating is oriented towards the bustling Hastings Street corridor, and primarily serves the pedestrian shopping community.
- The second cluster is set back from Hastings Street, oriented towards the residential neighbourhood and the view to the mountains.
- A banding detail of recycled cobblestones defines edges and visually invites people into the space
- A new garden bed with low plantings provides a buffer between the seating area and the busy corridor, while maintaining clear sightlines in all directions
- The planting bed visually links the installation with the existing garden bed running parallel to the building, and it deters skate and cycle use around the seating areas
- A portion of lawn in the utility corridor has eroded completely due to pedestrian traffic. A raised planter will be installed in this area, helping anchor the corner installation as a coherent whole.



PROPOSED SITE DESIGN

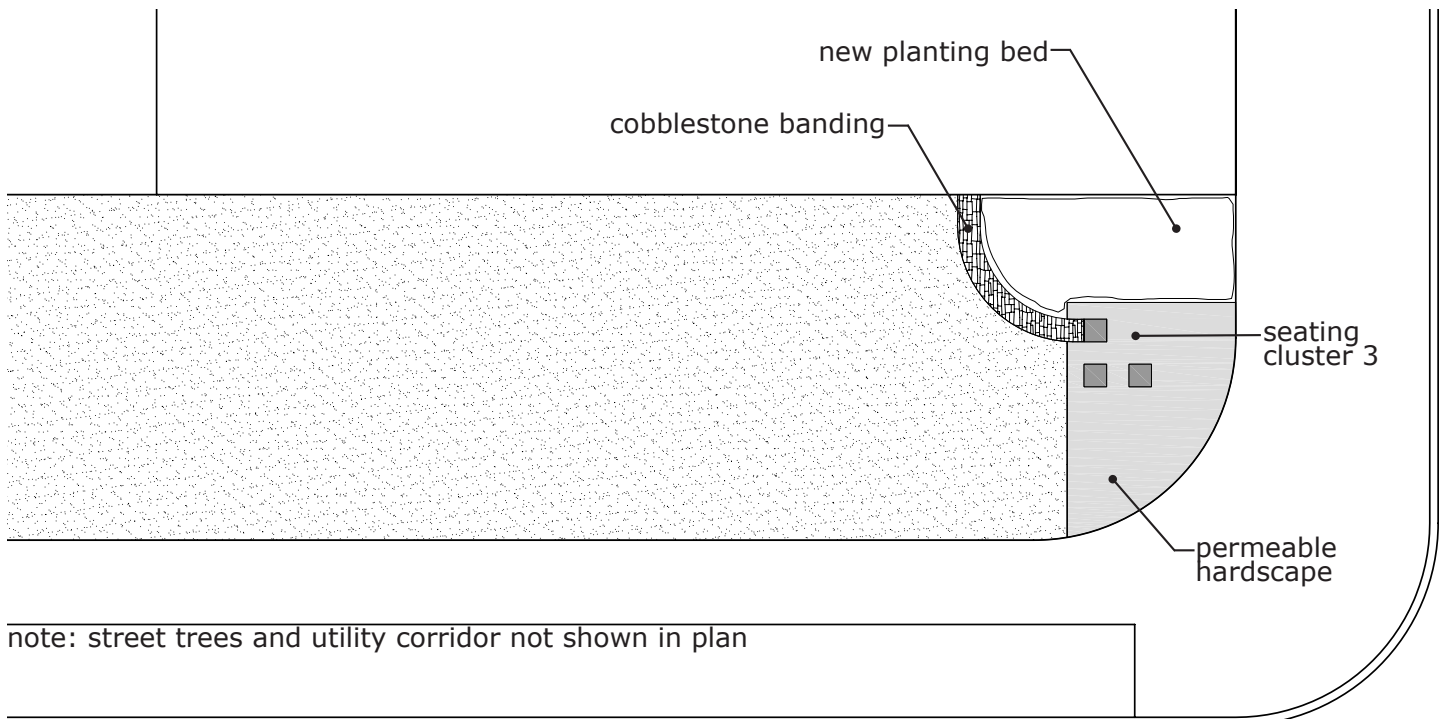
With Public Art Installation - Phase 2



Phase 2

Elements of Phase 1 will be extended across the street in order to visually bridge across Hastings corridor to help anchor the public identity of the intersection.

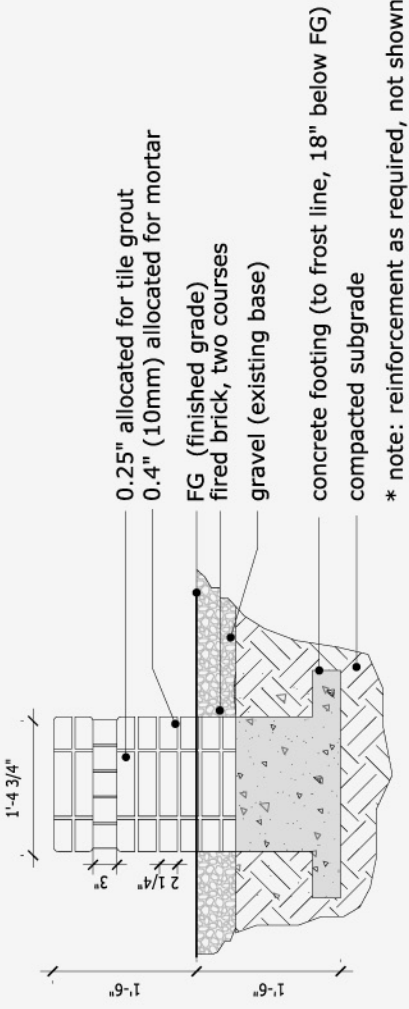
- A third seating cluster will be installed at the SW corner of Hastings and Kamloops Street. The seating area will be composed of three additional cubes.
- A banding detail of cobblestone and a new planting bed will likewise reflect elements of phase 1 and help form a coherent identity
- A mural composed of graphic elements in silhouette form against a simple, coloured background will be painted on the wall of the Money Mart and TD Bank.
- The murals will create a key vertical element to the installation, visually accessible to vehicular traffic and enhancing the linkages across the intersection.



scale: N.T.S. N

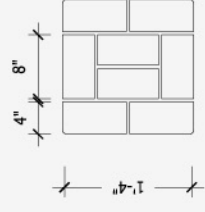
Appendices and Attachments:

Appendix B: BenchMark Detail Design (September 2007)



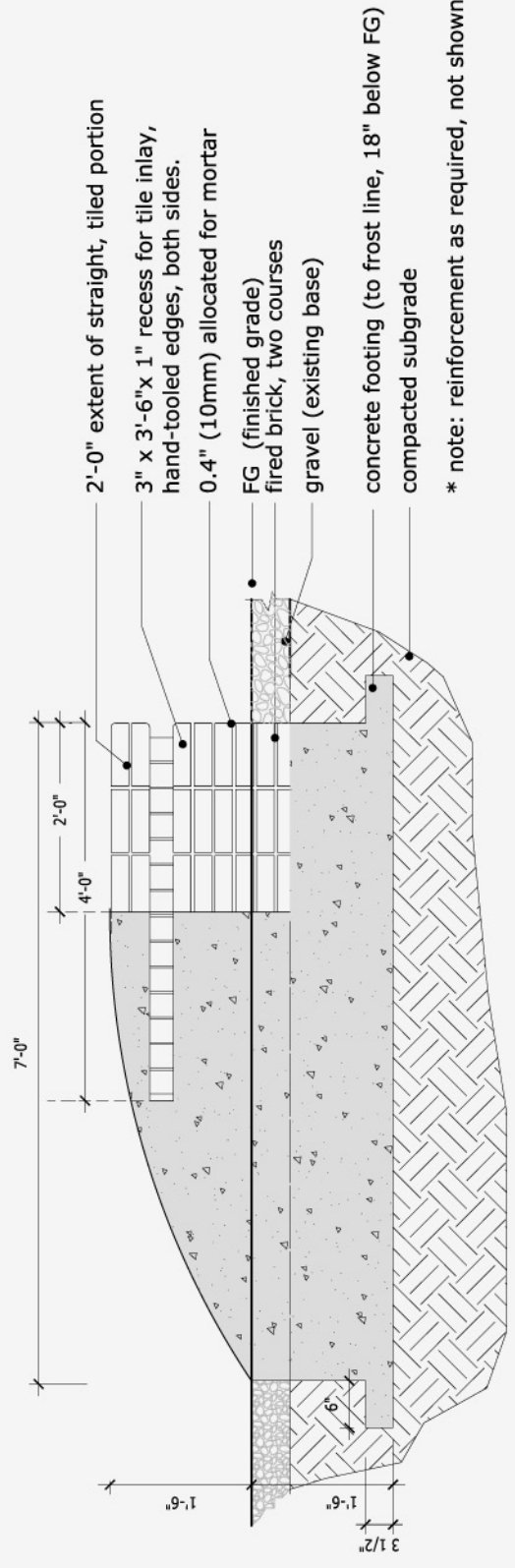
1
L1
Cube: East -West Elevation View

SCALE 1/2" = 1'



2
L1
Cube: Plan View

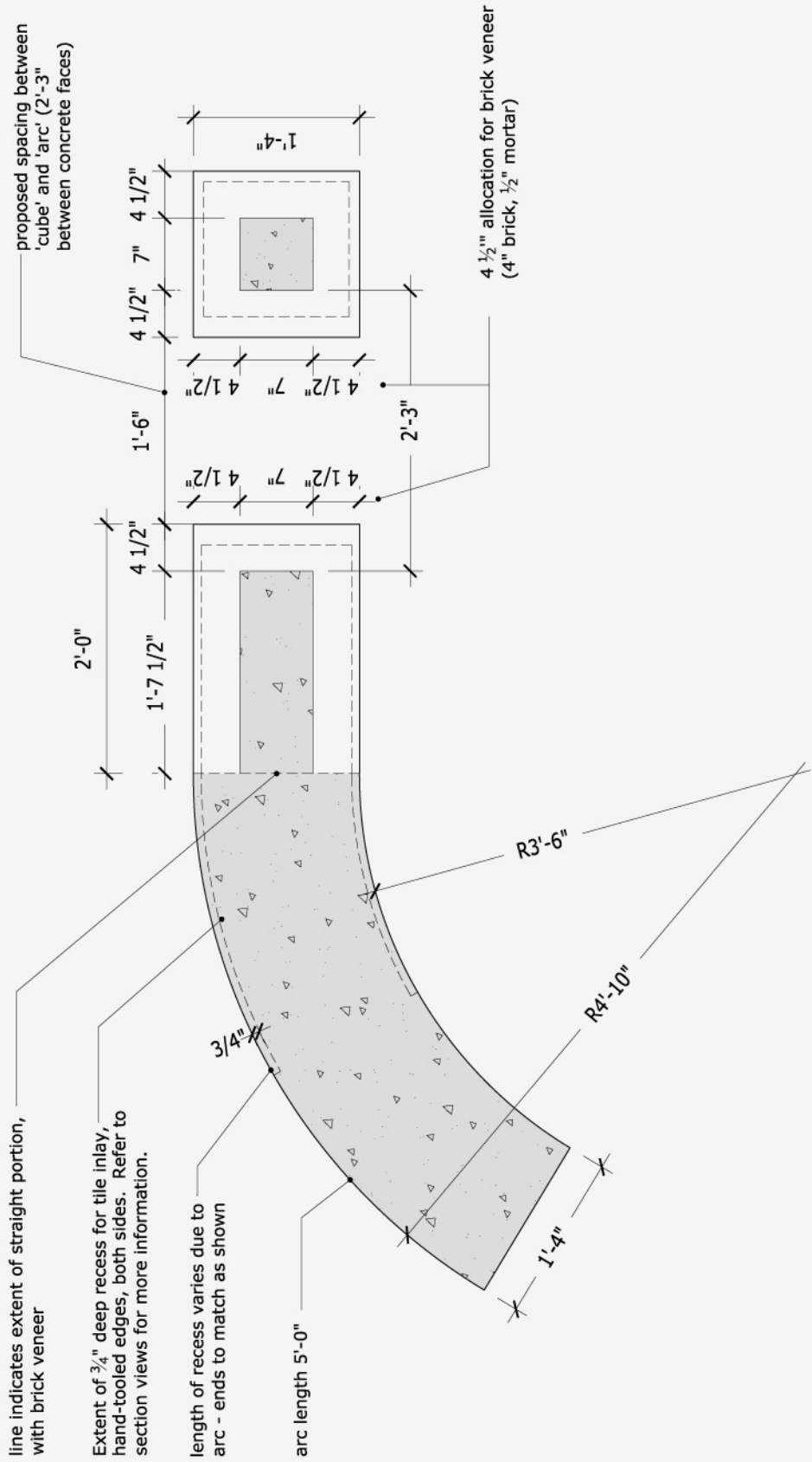
SCALE 1/2" = 1'



3
L1
Bench East-West Elevation View

SCALE 1/2" = 1' 2007.08.27 REVISED AS PER VSB AMENDMENTS

Note: Concrete to be stained Solomon #920 'Onxy'



line indicates extent of straight portion, with brick veneer

Extent of 3/4" deep recess for tile inlay, hand-tooled edges, both sides. Refer to section views for more information.

length of recess varies due to arc - ends to match as shown

arc length 5'-0"

proposed spacing between 'cube' and 'arc' (2'-3" between concrete faces)

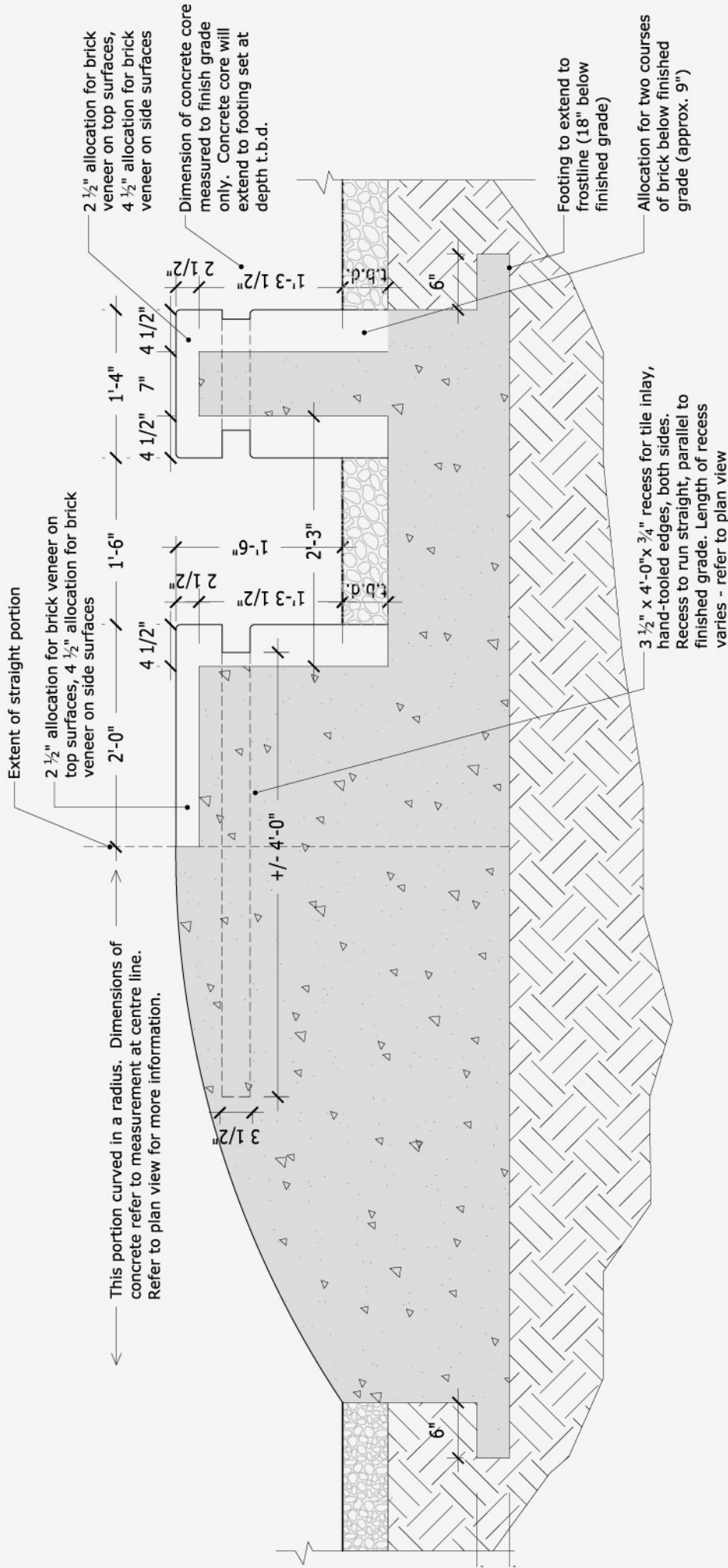
4 1/2" allocation for brick veneer (4" brick, 1/2" mortar)



7' Bench and Cube: Plan View with Concrete Core

SCALE 3/4" = 1' 2007.08.27 REVISED AS PER VSB AMENDMENTS

Note: Concrete to be stained Solomon #920 'Onxy'



7' Bench and Cube: Section View with Concrete Core

SCALE 3/4" = 1'

2007.08.27 REVISED AS PER VSB AMENDMENTS

5
L1

Appendices and Attachments:

Appendix C: Letters of Support (October 2007)

1. Hastings Sunrise City Plan Committee
2. Hastings North Business Improvement Association



October 30, 2007

Vancouver Board of Parks & Recreation
Neighbourhood Matching Fund
2099 Beach Avenue
Vancouver, BC V6G 1Z4

RE: Vancouver Parks Board Neighbourhood Matching Fund

On behalf of the Hastings-Sunrise CityPlan committee, please accept this letter of endorsement for the Hastings-Sunrise Public Realm subcommittee group which has applied for the Vancouver Parks Board Matching Fund. The Public Realm group is comprised of community volunteers working to implement the Hastings-Sunrise vision directions regarding public realm improvements in the Hasting-Sunrise area.

We feel that this application for the installation of sculptural benches on Kamloops Street at Hastings Street (Benchmark) will serve to assist in the accomplishment of the Hastings-Sunrise Vision approved directions noted below:

18.10 Improve the Area's Appearance

The appearance of the Hasting Sunrise/North shopping area should be improved through efforts of private owners, the BIA, and the City (e.g. street furniture, murals, public art, sculpture, bike racks, public notice boards, directory to the area, drinking fountains). Special streetscape treatment and 'branding' should be implemented to enhance the identity, cultural heritage, and viability of the shopping area.

18.13 Better Utilize Wide Side Streets

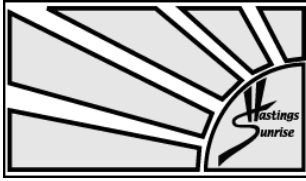
The extra wide (100') road allowances of side streets (such as Kamloops, Penticton, Slovan, Kaslo) are a major opportunity to create public spaces, to bring greater amenity and greening to the area, and to provide a respite from the noise of Hastings. Emphasis should be placed on the development of these as public spaces, rather than seeking public space in larger developments.¹

We encourage the Parks Board to select this group for the matching funds grant as we have community support and willing volunteers but no funds to make the approved City-Plan directions a reality.

Yours truly,

Haida Lane, Chairperson
Hastings-Sunrise CityPlan Committee

¹ <http://vancouver.ca/commsvcs/planning/cityplan/Visions/hs/pdf/neighcentres.pdf>



Hastings North Business Improvement Association

October 31, 2007

Vancouver Board of Parks and Recreation
Neighbourhood Matching Fund
2099 Beach Avenue
Vancouver, BC, V6G 1Z4

Re: Hastings-sunrise BenchMark Project Neighbourhood Matching Fund Request

Dear Board Members;

The Hastings North Business Improvement Association (BIA) is proud to lend their support to the installation of sculptural ceramic and brick benches at Kamloops and Hastings Streets. The BIA has worked with the community in the formation of this project and is continually working to improve the public realm of the area. We will continue to work with the community to assist in the installation and maintenance of this project. We believe that it will bring a visual and functional improvement to the area both at this corner and the overall BIA district. In its current form the project will include the BIA colours in order to maintain cohesiveness in the area which we believe is very important. In addition it will provide a community public meeting place and take advantage of the wide corner and the northern views.

The BIA looks forward to working with the community as a member of the Public Realm Committee and as an active participant in the upcoming Neighbourhood Centres Program. We recognize that one of the issues once the benches are installed is continued maintenance. The BIA has a number of programs including graffiti removal and garbage pickup that include and will continue to include this area. Consequently, we will ensure that graffiti is removed and garbage pickup does occur. In addition, the benches are designed to minimize graffiti as well as other forms of misuse.

Yours sincerely,

HASTINGS NORTH BUSINESS IMPROVEMENT ASSOCIATION

Patricia Barnes, Executive Director